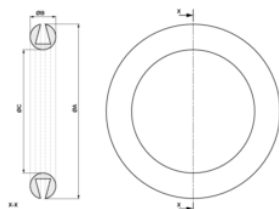


RETROFITTING SEAL TPE SEBS



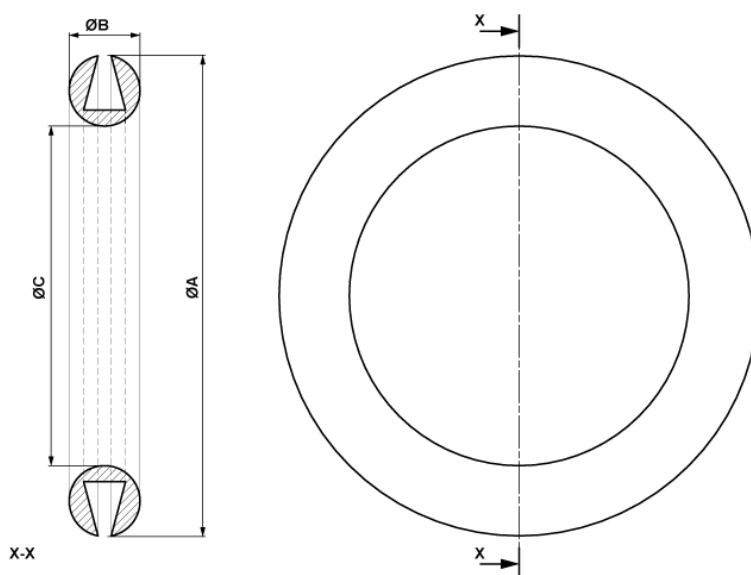
Technical description

Material: TPE-SEBS

Colour: Black

Operating temperature:
-40°C....+100°C

All dimensions are in mm.



Code	A	B	C	Mounting hole	Pipe	Thickness	MOQ-Pcs
17936PS01	149,5	Ø22,0	105,5	114,0-116,0	Ø110,0	5,0 -12,0	120
17937PS01	148,0	Ø 34,0	108,0	122,0	Ø110,0	20,0 - 30,0	80
17938PS01	195,2	Ø22,0	152,0	168,0	Ø 160,0	5,0 -12,0	90
17939PS01	148,0	Ø 34,0	108,0	168,0	Ø 160,0	20,0 - 30,0	60