

# RECTANGULAR PLUGS



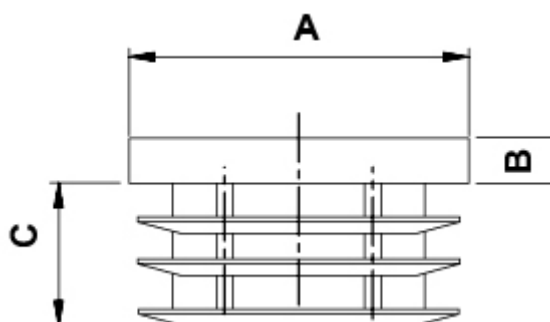
## Technical description

**Material:** Polyethylene LD-PE

**Colour:** Black

**Operating temperature:** -30°C ~ +70°C

All dimensions are in mm.



Code	A	B	C	Type	MOQ-Pcs
3341EA01	10x15	5,0	11,0	1	1.000
3342EA01	10x20	5,0	15,0	1	1.000
3343EA01	10x25	5,0	15,0	1	1.000
3344EA01	10x30	5,0	15,0	1	1.000
3345EA01	10x40	5,0	15,0	1	1.000
3346EA01	15x20	5,0	12,0	1	1.000
3347EA01	15x25	5,0	17,0	1	1.000
3348EA01	15x30	5,0	12,0	1	1.000
3349EA01	15x35	6,0	18,0	1	1.000
3350EA01	15x40	6,0	18,0	1	1.000

Code	A	B	C	Type	MOQ-Pcs
3351EA01	15x50	5,0	15,0	1	1.000
3352EA01	20x25	5,0	12,0	1	1.000
3353EA01	20x30	5,0	17,0	1	1.000
3354EA01	20x35	5,0	17,0	1	1.000
3355EA01	20x40	5,0	17,0	1	1.000
3356EA01	20x50	5,0	17,0	1	1.000
3357EA01	20x60	5,0	17,0	1	1.000
3358EA01	25x35	6,0	19,0	1	1.000
3359EA01	25x40	6,0	18,0	1	1.000
3360EA01	25x50	6,0	21,0	1	1.000
3361EA01	30x40	6,0	18,0	1	1.000
3362EA01	30x50	6,0	18,0	1	1.000
3363EA01	30x60	6,0	21,0	1	1.000
3364EA01	40x80	6,0	23,0	1	1.000