

# RECTANGULAR PLUGS



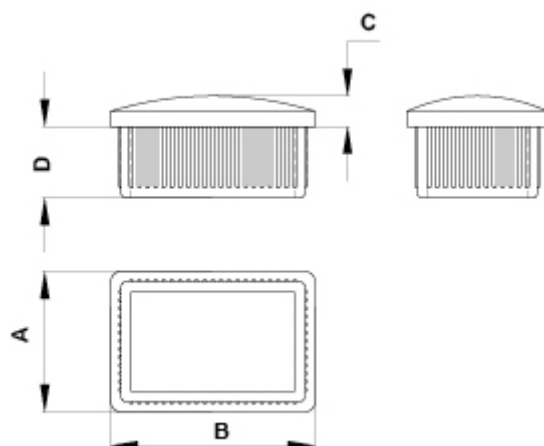
## Technical description

**Material:** ABS

**Colour:** Black, su richiesta verchromt

**E** = thickness pipe

All dimensions are in mm.



Code	A	B	C	D	E	MOQ-Pcs
3365HA01	20,0	30,0	3,0	9,0	1,2	500
3366HA01	20,0	30,0	3,0	9,0	1,5	500
3367HA01	20,0	35,0	3,0	9,0	1,5	250
3368HA01	20,0	40,0	3,5	9,0	1,2	250
3369HA01	20,0	40,0	3,5	9,0	1,5	250
3370HA01	20,0	50,0	3,0	10,0	1,2	200
3371HA01	20,0	50,0	3,0	10,0	1,5	200
3372HA01	20,0	60,0	3,0	10,0	1,5	200

Code	A	B	C	D	E	MOQ-Pcs
3373HA01	10,0	15,0	2,0	9,0	1,0	1.000
3374HA01	10,0	15,0	2,5	9,0	1,2	1.000
3375HA01	10,0	20,0	2,5	9,0	1,0	1.000
3376HA01	10,0	20,0	2,5	9,0	1,2	1.000
3377HA01	10,0	25,0	2,5	9,0	1,5	1.000
3378HA01	10,0	30,0	2,5	9,0	1,5	500
3379HA01	10,0	40,0	3,0	8,0	1,2	500
3380HA01	10,0	40,0	3,0	8,0	1,5	500
3381HA01	8,0	15,0	2,0	8,0	1,0	1.000
3382HA01	15,0	20,0	3,0	8,0	1,2	1.000
3383HA01	15,0	20,0	3,0	8,0	1,5	1.000
3384HA01	15,0	25,0	3,0	9,0	1,5	500
3385HA01	15,0	30,0	2,0	8,2	1,2	500
3386HA01	15,0	30,0	3,0	9,0	1,5	500
3387HA01	15,0	35,0	3,0	9,0	1,5	250
3388HA01	15,0	40,0	3,0	9,0	1,0	250
3389HA01	15,0	40,0	3,0	9,0	1,2	250
3390HA01	15,0	40,0	3,0	9,0	1,5	250