

PVC FEET AND PUSH-IN BUMPER



Technical description

Material: PVC

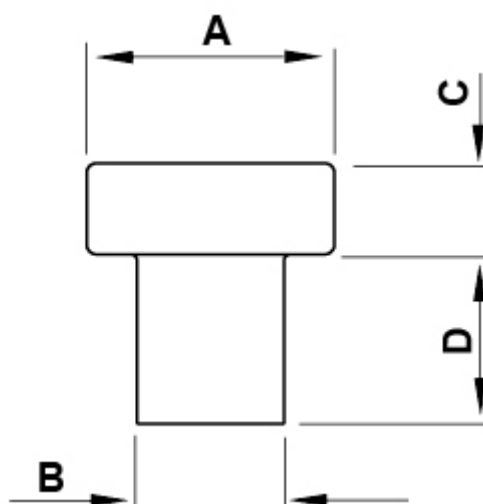
Operating temperature: -25°C ~ +60°C

Material: LD - PE

Operating temperature: -30°C ~ +60°C

Colour: Black

All dimensions are in mm.



Code	A	B	C	D	Material	MOQ-Pcs
0432CA01	15x10	6,0	4,5	9,0	PVC	2.500
0432EA01	15x10	6,0	4,5	9,0	PE-LD	2.500
0952CA01	12,0	8,0	2,0	5,0	PVC morbido	1.000
0960CA01	8,0	5,0	3,0	3,0	PVC	1.000

Code	A	B	C	D	Material	MOQ-Pcs
0961CA01	8,0	6,0	2,0	4,0	PVC	1.000
0963CA01	8,0	6,0	2,0	8,0	PVC	1.000
1202CA01	8,0	5,0	3,0	5,0	PVC	1.000
1203CA01	8,0	5,0	3,0	7,0	PVC	1.000
1204CA01	8,0	5,0	3,0	9,0	PVC	1.000
2344CA01	8,0	6,0	2,0	6,0	PVC	1.000
2345CA01	8,0	6,0	2,0	10,0	PVC	1.000