

PLUGS HOLE Ø 4,0 – 17,0



Technical description

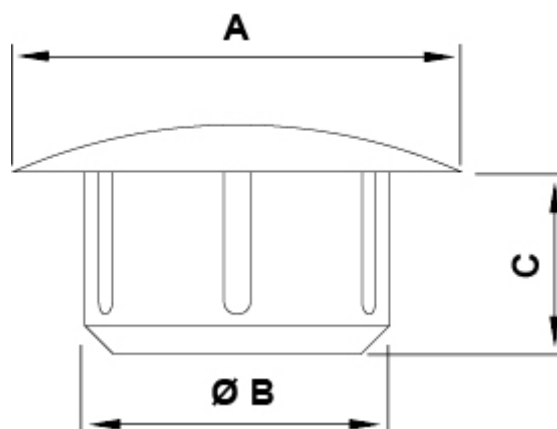
Material: Polyethylene LD-PE

Colour: Black

Flammability: HB (UL94)

Working temperature: -30°C ~ +70°C

All dimensions are in mm.



Code	A	B	C	Mounting hole	MOQ-Pcs
9220EA01	13,0	4,0	6,0	Ø 4,0	1.000
9221EA01	8,0	5,0	6,0	Ø 5,0	1.000
9222EA01	11,0	5,0	6,0	Ø 5,0	1.000
9223EA01	13,0	5,0	6,0	Ø 5,0	1.000
9224EA01	13,0	6,0	6,0	Ø 6,0	1.000
9225EA01	13,0	7,0	6,0	Ø 7,0	1.000
9226EA01	13,0	8,0	6,0	Ø 8,0	1.000
9227EA01	15,0	8,0	6,0	Ø 8,0	1.000

Code	A	B	C	Mounting hole	MOQ-Pcs
9228EA01	13,0	9,0	6,0	Ø 9,0	1.000
9229EA01	15,0	9,0	6,0	Ø 9,0	1.000
9230EA01	13,0	10,0	6,0	Ø 10,0	1.000
9231EA01	15,0	10,0	6,0	Ø 10,0	1.000
9232EA01	13,0	11,0	6,0	Ø 11,0	1.000
9233EA01	15,0	11,0	6,0	Ø 11,0	1.000
9234EA01	19,0	12,0	8,0	Ø 12,0	1.000
9235EA01	19,0	13,0	8,0	Ø 13,0	1.000
9236EA01	19,0	15,0	8,0	Ø 15,0	1.000
9237EA01	24,0	17,0	6,0	Ø 17,0	1.000