

PCV FEET AND PUSH-IN BUMPER



Technical description

Material: PVC

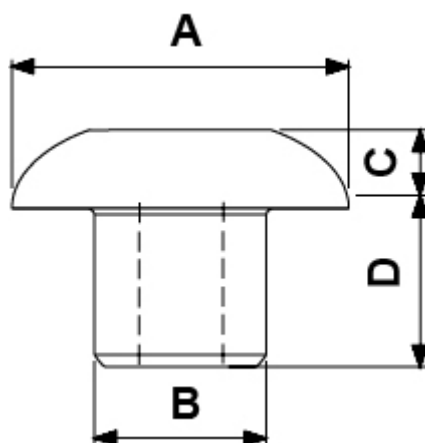
Operating temperature: -25°C ~ +60°C

Material: LD - PE

Operating temperature: -30°C ~ +60°C

Colour: Black

All dimensions are in mm.



| Code | A | B | C | D | Material | Type | MOQ-Pcs |
|----------|------|-----|-----|------|-------------|------|---------|
| 0426CA01 | 9,5 | 5,0 | 3,0 | 6,0 | PVC morbido | 1 | 2.500 |
| 0426EA01 | 9,5 | 5,0 | 3,0 | 6,0 | PE-LD | 1 | 2.500 |
| 0427CA01 | 12,0 | 6,0 | 3,0 | 7,5 | PVC morbido | 1 | 2.500 |
| 0427EA01 | 12,0 | 6,0 | 3,0 | 7,5 | PE-LD | 1 | 2.500 |
| 0428CA01 | 14,0 | 6,0 | 4,0 | 15,0 | PVC morbido | 1 | 2.500 |

| Code | A | B | C | D | Material | Type | MOQ-Pcs |
|----------|------|------|-----|------|-------------|------|---------|
| 0428EA01 | 14,0 | 6,0 | 4,0 | 15,0 | PE-LD | 1 | 2.500 |
| 0429CA01 | 18,0 | 8,0 | 5,0 | 15,0 | PVC morbido | 1 | 2.500 |
| 0429EA01 | 18,0 | 8,0 | 5,0 | 15,0 | PE-LD | 1 | 2.500 |
| 0430CA01 | 20,0 | 8,0 | 5,0 | 15,0 | PVC morbido | 1 | 2.500 |
| 0430EA01 | 20,0 | 8,0 | 5,0 | 15,0 | PE-LD | 1 | 2.500 |
| 0431CA01 | 24,0 | 11,0 | 5,0 | 13,0 | PVC morbido | 1 | 2.500 |
| 0431EA01 | 24,0 | 11,0 | 5,0 | 13,0 | PE-LD | 1 | 2.500 |
| 0966CA01 | 10,0 | 8,0 | 3,0 | 9,0 | PVC morbido | 1 | 2.500 |