

PCV FEET AND PUSH-IN BUMPER



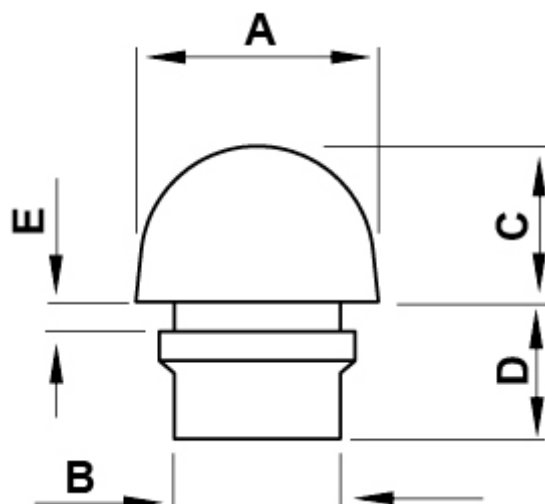
Technical description

Material: PVC

Colour: Black

Operating temperature: -25°C ~ +60°C

All dimensions are in mm.



Code	A	B	C	D	E	Material	MOQ-Pcs
0958CA01	12,0	6,0	9,0	7,0	1,0	PVC morbido	1.000
0959CA01	12,0	8,0	9,0	7,0	1,0	PVC morbido	1.000
2347CA01	12,0	7,0	9,0	7,0	1,0	PVC morbido	1.000
2348CA01	12,0	9,0	9,0	7,0	1,0	PVC morbido	1.000