

# P-CLIP GALVANIZED STEEL EPDM RUBBER W1



## Technical description

**Material band:** Galvanized steel

**Material lining:** EPDM

**EPDM colour:** black

**Flammability:**

- EPDM: HB (UL94)

**Working temperature:**

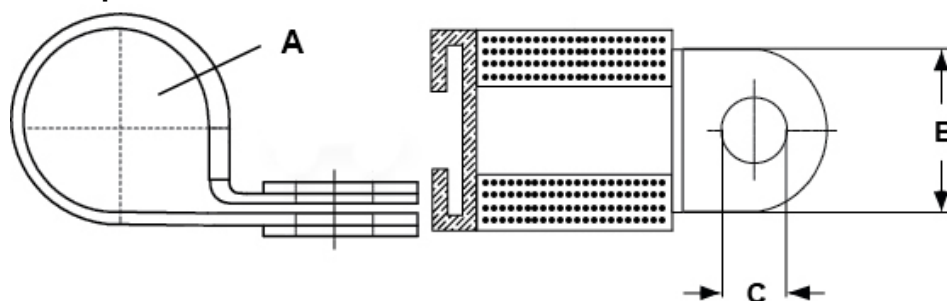
- EPDM: -30°C ~ +120°C

**DIN 3016**

**A=** tube - cable diameter

**All dimensions are in mm**

**Available by special request in stainless steel and other size**



Code	A	B	C	MOQ-Pcs
20000MC94PS	5,0	12,0	M5	250
20001MC94PS	6,0	12,0	M5	250
20002MC94PS	7,0	12,0	M5	250
20003MC94PS	8,0	12,0	M5	250
20004MC94PS	9,0	12,0	M5	250
20005MC94PS	10,0	12,0	M5	250
20006MC94PS	11,0	12,0	M5	250
20007MC94PS	12,0	12,0	M5	250

Code	A	B	C	MOQ-Pcs
20008MC94PS	13,0	12,0	M5	250
20009MC94PS	14,0	12,0	M5	250
20010MC94PS	15,0	12,0	M5	250
20011MC94PS	16,0	12,0	M5	200
20012MC94PS	17,0	12,0	M5	200
20013MC94PS	18,0	12,0	M5	200
20014MC94PS	19,0	12,0	M5	200
20015MC94PS	20,0	12,0	M5	200
20016MC94PS	21,0	12,0	M5	200
20017MC94PS	22,0	12,0	M5	200
20018MC94PS	23,0	12,0	M5	200
20019MC94PS	24,0	12,0	M5	200
20020MC94PS	26,0	12,0	M5	200
20021MC94PS	28,0	12,0	M5	200
20022MC94PS	30,0	12,0	M5	100
20023MC94PS	32,0	12,0	M5	100
20024MC94PS	34,0	12,0	M5	100
20025MC94PS	36,0	12,0	M5	50
20026MC94PS	38,0	12,0	M5	50
20027MC94PS	40,0	12,0	M5	50
20028MC94PS	42,0	12,0	M5	50
20029MC94PS	44,0	12,0	M5	50
20030MC94PS	46,0	12,0	M5	50
20031MC94PS	48,0	12,0	M5	50
20032MC94PS	50,0	12,0	M5	50
20033MC94PS	52,0	12,0	M5	50
20034MC94PS	54,0	12,0	M5	50
20035MC94PS	56,0	12,0	M5	50
20036MC94PS	58,0	12,0	M5	50
20037MC94PS	60,0	12,0	M5	50
20038MC94PS	5,0	15,0	M6	250

Code	A	B	C	MOQ-Pcs
20039MC94PS	6,0	15,0	M6	250
20040MC94PS	7,0	15,0	M6	250
20041MC94PS	8,0	15,0	M6	250
20042MC94PS	9,0	15,0	M6	250
20043MC94PS	10,0	15,0	M6	250
20044MC94PS	12,0	15,0	M6	250
20045MC94PS	13,0	15,0	M6	200
20046MC94PS	14,0	15,0	M6	200
20047MC94PS	15,0	15,0	M6	250
20048MC94PS	16,0	15,0	M6	250
20049MC94PS	17,0	15,0	M6	200
20050MC94PS	18,0	15,0	M6	250
20051MC94PS	19,0	15,0	M6	250
20052MC94PS	20,0	15,0	M6	200
20053MC94PS	21,0	15,0	M6	100
20054MC94PS	22,0	15,0	M6	100
20055MC94PS	23,0	15,0	M6	100
20056MC94PS	24,0	15,0	M6	100
20057MC94PS	26,0	15,0	M6	100
20058MC94PS	28,0	15,0	M6	100
20059MC94PS	30,0	15,0	M6	100
20060MC94PS	32,0	15,0	M6	100
20061MC94PS	34,0	15,0	M6	100
20062MC94PS	36,0	15,0	M6	100
20063MC94PS	38,0	15,0	M6	100
20064MC94PS	40,0	15,0	M6	100
20065MC94PS	42,0	15,0	M6	50
20066MC94PS	44,0	15,0	M6	50
20067MC94PS	46,0	15,0	M6	50
20068MC94PS	48,0	15,0	M6	50
20069MC94PS	50,0	15,0	M6	50

Code	A	B	C	MOQ-Pcs
20070MC94PS	52,0	15,0	M6	50
20071MC94PS	54,0	15,0	M6	50
20072MC94PS	56,0	15,0	M6	50
20073MC94PS	58,0	15,0	M6	50
20074MC94PS	60,0	15,0	M6	50
20075MC94PS	10,0	20,0	M8	100
20076MC94PS	11,0	20,0	M8	100
20077MC94PS	12,0	20,0	M8	100
20078MC94PS	13,0	20,0	M8	100
20079MC94PS	14,0	20,0	M8	100
20080MC94PS	15,0	20,0	M8	100
20081MC94PS	16,0	20,0	M8	100
20082MC94PS	17,0	20,0	M8	100
20083MC94PS	18,0	20,0	M8	100
20084MC94PS	19,0	20,0	M8	50
20085MC94PS	20,0	20,0	M8	50
20086MC94PS	21,0	20,0	M8	50
20087MC94PS	22,0	20,0	M8	50
20088MC94PS	23,0	20,0	M8	50
20089MC94PS	24,0	20,0	M8	50
20090MC94PS	26,0	20,0	M8	50
20091MC94PS	28,0	20,0	M8	50
20092MC94PS	30,0	20,0	M8	50
20093MC94PS	32,0	20,0	M8	50
20094MC94PS	34,0	20,0	M8	50
20095MC94PS	36,0	20,0	M8	50
20096MC94PS	38,0	20,0	M8	50
20097MC94PS	40,0	20,0	M8	50
20098MC94PS	42,0	20,0	M8	50
20099MC94PS	44,0	20,0	M8	50
20100MC94PS	46,0	20,0	M8	50

Code	A	B	C	MOQ-Pcs
20101MC94PS	48,0	20,0	M8	50
20102MC94PS	50,0	20,0	M8	25
20103MC94PS	52,0	20,0	M8	25
20104MC94PS	54,0	20,0	M8	25
20105MC94PS	56,0	20,0	M8	25
20106MC94PS	58,0	20,0	M8	25
20107MC94PS	60,0	20,0	M8	25
20108MC94PS	62,0	20,0	M8	25
20109MC94PS	64,0	20,0	M8	25
20110MC94PS	66,0	20,0	M8	25
20111MC94PS	68,0	20,0	M8	25
20112MC94PS	15,0	25,0	M10	100
20113MC94PS	16,0	25,0	M10	100
20114MC94PS	17,0	25,0	M10	50
20115MC94PS	18,0	25,0	M10	50
20116MC94PS	19,0	25,0	M10	50
20117MC94PS	20,0	25,0	M10	50
20118MC94PS	22,0	25,0	M10	50
20119MC94PS	24,0	25,0	M10	50
20120MC94PS	26,0	25,0	M10	50
20121MC94PS	28,0	25,0	M10	50
20122MC94PS	30,0	25,0	M10	50
20123MC94PS	32,0	25,0	M10	50
20124MC94PS	34,0	25,0	M10	50
20125MC94PS	36,0	25,0	M10	50
20126MC94PS	38,0	25,0	M10	50
20127MC94PS	40,0	25,0	M10	50
20128MC94PS	42,0	25,0	M10	50
20129MC94PS	44,0	25,0	M10	50
20130MC94PS	46,0	25,0	M10	50
20131MC94PS	48,0	25,0	M10	25

Code	A	B	C	MOQ-Pcs
20132MC94PS	50,0	25,0	M10	25
20133MC94PS	52,0	25,0	M10	25
20134MC94PS	54,0	25,0	M10	25
20135MC94PS	56,0	25,0	M10	25
20136MC94PS	58,0	25,0	M10	25
20137MC94PS	60,0	25,0	M10	25
20138MC94PS	62,0	25,0	M10	25
20139MC94PS	64,0	25,0	M10	25
20140MC94PS	66,0	25,0	M10	25
20141MC94PS	68,0	25,0	M10	25