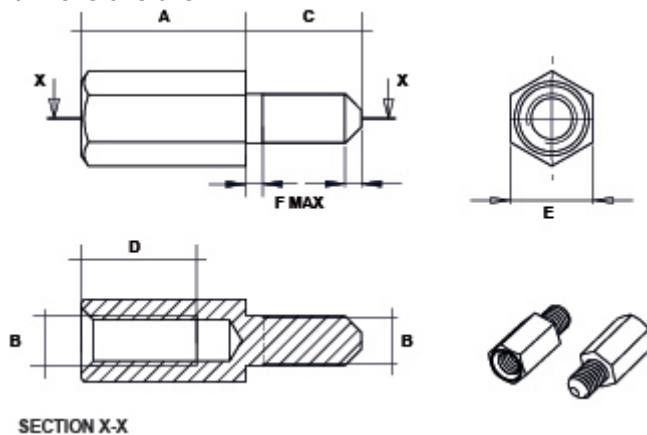


NICKEL-PLATED BRASS THREADED P.C.B SPACER M3



Technical description

Material: Nickel-plated brass All dimensions are in mm



Code	A	B	C	D	E	F	MOQ-Pcs
7555MA92	5,0	M3	7,0	3,0	5,0	1,0	500
7557MA92	6,0	M3	7,0	5,0	5,0	1,0	500
7559MA92	7,0	M3	7,0	5,5	5,0	1,0	500
7560MA92	8,0	M3	7,0	6,0	5,0	1,0	500
7561MA92	9,0	M3	7,0	7,0	5,0	1,0	500
7538MA92	10,0	M3	7,0	7,0	5,0	1,0	500
7539MA92	11,0	M3	7,0	7,0	5,0	1,0	500
7540MA92	12,0	M3	7,0	7,0	5,0	1,0	500
7541MA92	13,0	M3	7,0	7,0	5,0	1,0	500
7542MA92	14,0	M3	7,0	7,0	5,0	1,0	500
7543MA92	15,0	M3	7,0	7,0	5,0	1,0	500
7544MA92	16,0	M3	7,0	7,0	5,0	1,0	500
7545MA92	17,0	M3	7,0	7,0	5,0	1,0	500

Code	A	B	C	D	E	F	MOQ-Pcs
7546MA92	18,0	M3	7,0	7,0	5,0	1,0	500
7547MA92	20,0	M3	7,0	7,0	5,0	1,0	500
7548MA92	22,0	M3	7,0	7,0	5,0	1,0	500
7549MA92	25,0	M3	7,0	7,0	5,0	1,0	500
7550MA92	30,0	M3	7,0	7,0	5,0	1,0	500
7551MA92	32,0	M3	7,0	7,0	5,0	1,0	500
7552MA92	35,0	M3	7,0	7,0	5,0	1,0	500
7553MA92	40,0	M3	7,0	7,0	5,0	1,0	500
7554MA92	45,0	M3	7,0	7,0	5,0	1,0	500
7556MA92	50,0	M3	7,0	7,0	5,0	1,0	500
7558MA92	60,0	M3	7,0	7,0	5,0	1,0	500