

## METRIC M3 SPACERS WITH SNAP-LOCK HOLE Ø 4,0 X 3,0



### Technical description

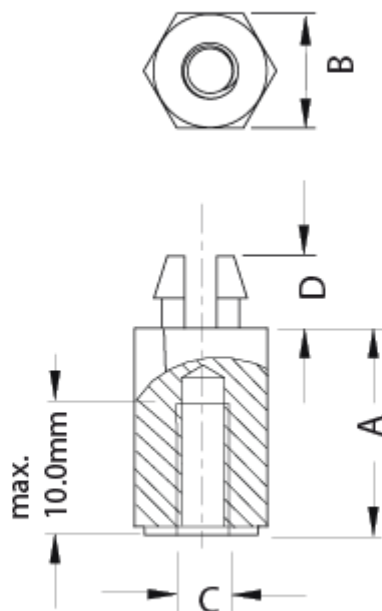
**Material:** PA 6.6

**Colour:** Black

**UL Flammability:** HB (UL 94)

**Operating temperature:** -30°C ~ +150°C

All dimensions are in mm.



| Code          | A   | B   | C  | D   | Mounting hole | Thickness | MOQ-Pcs |
|---------------|-----|-----|----|-----|---------------|-----------|---------|
| 10028AA0105.0 | 5,0 | 6,0 | M3 | 4,2 | 4,0 x 3,0     | 1,5       | 500     |

| Code          | A    | B   | C  | D   | Mounting hole | Thickness | MOQ-Pcs |
|---------------|------|-----|----|-----|---------------|-----------|---------|
| 10028AA0106.0 | 6,0  | 6,0 | M3 | 4,2 | 4,0 x 3,0     | 1,5       | 500     |
| 10028AA0107.0 | 7,0  | 6,0 | M3 | 4,2 | 4,0 x 3,0     | 1,5       | 500     |
| 10028AA0108.0 | 8,0  | 6,0 | M3 | 4,2 | 4,0 x 3,0     | 1,5       | 500     |
| 10028AA0109.0 | 9,0  | 6,0 | M3 | 4,2 | 4,0 x 3,0     | 1,5       | 500     |
| 10028AA0110.0 | 10,0 | 6,0 | M3 | 4,2 | 4,0 x 3,0     | 1,5       | 500     |
| 10028AA0111.0 | 11,0 | 6,0 | M3 | 4,2 | 4,0 x 3,0     | 1,5       | 500     |
| 10028AA0112.0 | 12,0 | 6,0 | M3 | 4,2 | 4,0 x 3,0     | 1,5       | 500     |
| 10028AA0113.0 | 13,0 | 6,0 | M3 | 4,2 | 4,0 x 3,0     | 1,5       | 500     |
| 10028AA0114.0 | 14,0 | 6,0 | M3 | 4,2 | 4,0 x 3,0     | 1,5       | 500     |
| 10028AA0115.0 | 15,0 | 6,0 | M3 | 4,2 | 4,0 x 3,0     | 1,5       | 500     |
| 10028AA0116.0 | 16,0 | 6,0 | M3 | 4,2 | 4,0 x 3,0     | 1,5       | 500     |
| 10028AA0117.0 | 17,0 | 6,0 | M3 | 4,2 | 4,0 x 3,0     | 1,5       | 500     |
| 10028AA0118.0 | 18,0 | 6,0 | M3 | 4,2 | 4,0 x 3,0     | 1,5       | 500     |
| 10028AA0119.0 | 19,0 | 6,0 | M3 | 4,2 | 4,0 x 3,0     | 1,5       | 500     |
| 10028AA0120.0 | 20,0 | 6,0 | M3 | 4,2 | 4,0 x 3,0     | 1,5       | 500     |
| 10028AA0121.0 | 21,0 | 6,0 | M3 | 4,2 | 4,0 x 3,0     | 1,5       | 500     |
| 10028AA0122.0 | 22,0 | 6,0 | M3 | 4,2 | 4,0 x 3,0     | 1,5       | 500     |
| 10028AA0123.0 | 23,0 | 6,0 | M3 | 4,2 | 4,0 x 3,0     | 1,5       | 500     |
| 10028AA0124.0 | 24,0 | 6,0 | M3 | 4,2 | 4,0 x 3,0     | 1,5       | 500     |
| 10028AA0125.0 | 25,0 | 6,0 | M3 | 4,2 | 4,0 x 3,0     | 1,5       | 500     |
| 10028AA0126.0 | 26,0 | 6,0 | M3 | 4,2 | 4,0 x 3,0     | 1,5       | 500     |
| 10028AA0127.0 | 27,0 | 6,0 | M3 | 4,2 | 4,0 x 3,0     | 1,5       | 500     |
| 10028AA0128.0 | 28,0 | 6,0 | M3 | 4,2 | 4,0 x 3,0     | 1,5       | 500     |
| 10028AA0129.0 | 29,0 | 6,0 | M3 | 4,2 | 4,0 x 3,0     | 1,5       | 500     |
| 10028AA0130.0 | 30,0 | 6,0 | M3 | 4,2 | 4,0 x 3,0     | 1,5       | 500     |
| 10028AA0131.0 | 31,0 | 6,0 | M3 | 4,2 | 4,0 x 3,0     | 1,5       | 500     |
| 10028AA0132.0 | 32,0 | 6,0 | M3 | 4,2 | 4,0 x 3,0     | 1,5       | 500     |
| 10028AA0133.0 | 33,0 | 6,0 | M3 | 4,2 | 4,0 x 3,0     | 1,5       | 500     |
| 10028AA0134.0 | 34,0 | 6,0 | M3 | 4,2 | 4,0 x 3,0     | 1,5       | 500     |
| 10028AA0135.0 | 35,0 | 6,0 | M3 | 4,2 | 4,0 x 3,0     | 1,5       | 500     |
| 10028AA0136.0 | 36,0 | 6,0 | M3 | 4,2 | 4,0 x 3,0     | 1,5       | 500     |

| Code          | A    | B   | C  | D   | Mounting hole | Thickness | MOQ-Pcs |
|---------------|------|-----|----|-----|---------------|-----------|---------|
| 10028AA0137.0 | 37,0 | 6,0 | M3 | 4,2 | 4,0 x 3,0     | 1,5       | 500     |
| 10028AA0138.0 | 38,0 | 6,0 | M3 | 4,2 | 4,0 x 3,0     | 1,5       | 500     |
| 10028AA0139.0 | 39,0 | 6,0 | M3 | 4,2 | 4,0 x 3,0     | 1,5       | 500     |
| 10028AA0140.0 | 40,0 | 6,0 | M3 | 4,2 | 4,0 x 3,0     | 1,5       | 500     |
| 10028AA0141.0 | 41,0 | 6,0 | M3 | 4,2 | 4,0 x 3,0     | 1,5       | 500     |
| 10028AA0142.0 | 42,0 | 6,0 | M3 | 4,2 | 4,0 x 3,0     | 1,5       | 500     |
| 10028AA0143.0 | 43,0 | 6,0 | M3 | 4,2 | 4,0 x 3,0     | 1,5       | 500     |
| 10028AA0144.0 | 44,0 | 6,0 | M3 | 4,2 | 4,0 x 3,0     | 1,5       | 500     |
| 10028AA0145.0 | 45,0 | 6,0 | M3 | 4,2 | 4,0 x 3,0     | 1,5       | 500     |
| 10028AA0146.0 | 46,0 | 6,0 | M3 | 4,2 | 4,0 x 3,0     | 1,5       | 500     |
| 10028AA0147.0 | 47,0 | 6,0 | M3 | 4,2 | 4,0 x 3,0     | 1,5       | 500     |
| 10028AA0148.0 | 48,0 | 6,0 | M3 | 4,2 | 4,0 x 3,0     | 1,5       | 500     |
| 10028AA0149.0 | 49,0 | 6,0 | M3 | 4,2 | 4,0 x 3,0     | 1,5       | 500     |
| 10028AA0150.0 | 50,0 | 6,0 | M3 | 4,2 | 4,0 x 3,0     | 1,5       | 500     |
| 10028AA0151.0 | 51,0 | 6,0 | M3 | 4,2 | 4,0 x 3,0     | 1,5       | 500     |
| 10028AA0152.0 | 52,0 | 6,0 | M3 | 4,2 | 4,0 x 3,0     | 1,5       | 500     |
| 10028AA0153.0 | 53,0 | 6,0 | M3 | 4,2 | 4,0 x 3,0     | 1,5       | 500     |
| 10028AA0154.0 | 54,0 | 6,0 | M3 | 4,2 | 4,0 x 3,0     | 1,5       | 500     |
| 10028AA0155.0 | 55,0 | 6,0 | M3 | 4,2 | 4,0 x 3,0     | 1,5       | 500     |
| 10028AA0156.0 | 56,0 | 6,0 | M3 | 4,2 | 4,0 x 3,0     | 1,5       | 500     |
| 10028AA0157.0 | 57,0 | 6,0 | M3 | 4,2 | 4,0 x 3,0     | 1,5       | 500     |
| 10028AA0158.0 | 58,0 | 6,0 | M3 | 4,2 | 4,0 x 3,0     | 1,5       | 500     |
| 10028AA0159.0 | 59,0 | 6,0 | M3 | 4,2 | 4,0 x 3,0     | 1,5       | 500     |
| 10028AA0160.0 | 60,0 | 6,0 | M3 | 4,2 | 4,0 x 3,0     | 1,5       | 500     |
| 10028AA0161.0 | 61,0 | 6,0 | M3 | 4,2 | 4,0 x 3,0     | 1,5       | 500     |