

## LUGS FROM UNINSULATED COPPER PIPE



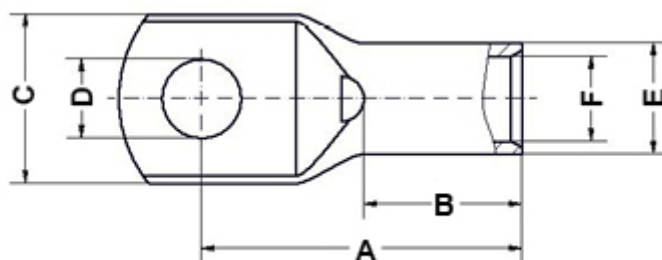
### Technical description

Terminal material: Copper CU-HCP 99,9% tinned

Cable Lugs: 1,5 - 630 mm<sup>2</sup>

With inspection Hole

All dimensions are in mm



Code	A	B	C	D	E	F	Section mm2	Mounting hole	MOQ-Pcs
16892ZG91	14,0	6,0	6,5	3,2	3,9	1,9	1,0 - 1,5	Ø 3,0	50
16895ZG91	18,0	6,0	11,0	6,4	3,9	1,9	1,0 - 1,5	Ø 6,0	50
16893ZG91	15,0	6,0	8,5	4,3	3,9	1,9	1,0 - 1,5	Ø 4,0	50
16894ZG91	16,0	6,0	10,0	5,3	3,9	1,9	1,0 - 1,5	Ø 5,0	50

Code	A	B	C	D	E	F	Section mm2	Mounting hole	MOQ-Pcs
16907ZG91	15,0	6,5	8,5	4,3	4,4	2,4	2,5	Ø 4,0	50
16908ZG91	16,0	6,5	10,0	5,3	4,4	2,4	2,5	Ø 5,0	50
16909ZG91	18,0	6,5	11,0	6,4	4,4	2,4	2,5	Ø 6,0	50
16910ZG91	20,0	6,5	13,0	8,4	4,4	2,4	2,5	Ø 8,0	50
16924ZG91	17,0	8,0	8,5	4,3	5,0	3,0	4,0	Ø 4,0	50
16925ZG91	18,0	8,0	10,0	5,3	5,0	3,0	4,0	Ø 5,0	50
16926ZG91	20,0	8,0	11,0	6,4	5,0	3,0	4,0	Ø 6,0	50
16927ZG91	22,0	8,0	14,0	8,4	5,0	3,0	4,0	Ø 8,0	50
16932ZG91	23,0	8,0	14,0	8,4	5,5	3,7	6,0	Ø 8,0	50
16930ZG91	19,0	8,0	10,0	5,3	5,5	3,7	6,0	Ø 5,0	50
16931ZG91	21,0	8,0	11,0	6,4	5,5	3,7	6,0	Ø 6,0	50
16929ZG91	17,5	8,0	8,5	4,3	5,5	3,7	6,0	Ø 4,0	50
16898ZG91	19,5	10,0	10,0	4,3	6,7	4,3	10,0	Ø 4,0	50
16899ZG91	20,5	10,0	10,0	5,3	6,7	4,3	10,0	Ø 5,0	50
16900ZG91	22,5	10,0	11,0	6,4	6,7	4,3	10,0	Ø 6,0	50
16901ZG91	25,0	10,0	15,0	8,4	6,7	4,3	10,0	Ø 8,0	50
16896ZG91	27,5	10,0	18,0	10,5	6,7	4,3	10,0	Ø 10,0	50
16897ZG91	28,5	10,0	19,0	13,0	6,7	4,3	10,0	Ø 12,0	50
16902ZG91	29,0	11,0	18,0	10,5	7,8	5,4	16,0	Ø 10,0	50
16903ZG91	30,0	11,0	20,0	13,0	7,8	5,4	16,0	Ø 12,0	50
16906ZG91	26,5	11,0	15,0	8,4	7,8	5,4	16,0	Ø 8,0	50
16905ZG91	24,5	11,0	12,0	6,4	7,8	5,4	16,0	Ø 6,0	50
16904ZG91	22,5	11,0	12,0	5,3	7,8	5,4	16,0	Ø 5,0	50
16914ZG91	25,0	13,0	14,0	5,3	9,4	6,9	25,0	Ø 5,0	50
16915ZG91	27,0	13,0	14,0	6,4	9,4	6,9	25,0	Ø 6,0	50
16916ZG91	29,0	13,0	15,0	8,4	9,4	6,9	25,0	Ø 8,0	50
16911ZG91	31,5	13,0	18,0	10,5	9,4	6,9	25,0	Ø 10,0	50
16913ZG91	34,5	13,0	22,0	15,0	9,4	6,9	25,0	Ø 14,0	50
16920ZG91	41,5	16,0	26,0	17,0	11,3	8,3	35,0	Ø 16,0	25
16919ZG91	39,0	16,0	22,0	15,0	11,3	8,3	35,0	Ø 14,0	25
16923ZG91	33,0	16,0	16,5	8,4	11,3	8,3	35,0	Ø 8,0	25

Code	A	B	C	D	E	F	Section mm2	Mounting hole	MOQ-Pcs
16922ZG91	32,5	16,0	16,5	6,4	11,3	8,3	35,0	Ø 6,0	25
16921ZG91	32,5	16,0	16,5	5,3	11,3	8,3	35,0	Ø 5,0	25
16956ZG91	36,0	18,0	19,0	6,4	13,1	9,6	50,0	Ø 6,0	25
16957ZG91	37,0	18,0	19,0	8,4	13,1	9,6	50,0	Ø 8,0	25
16951ZG91	39,0	18,0	20,0	10,5	13,1	9,6	50,0	Ø 10,0	25
16952ZG91	40,5	18,0	23,0	13,0	13,1	9,6	50,0	Ø 12,0	25
16953ZG91	42,5	18,0	25,0	15,0	13,1	9,6	50,0	Ø 14,0	25
16954ZG91	45,5	18,0	27,0	17,0	13,1	9,6	50,0	Ø 16,0	25
16955ZG91	50,0	18,0	28,0	21,0	13,1	9,6	50,0	Ø 20,0	25
16961ZG91	48,5	21,0	28,0	17,0	14,7	11,3	70,0	Ø 16,0	25
16960ZG91	46,0	21,0	26,0	15,0	14,7	11,3	70,0	Ø 14,0	25
16963ZG91	41,0	21,0	22,5	8,4	14,7	11,3	70,0	Ø 8,0	25
16959ZG91	43,5	21,0	23,0	13,0	14,7	11,3	70,0	Ø 12,0	25
16962ZG91	41,0	21,0	22,5	6,4	14,7	11,3	70,0	Ø 6,0	25
16958ZG91	42,5	21,0	22,5	10,5	14,7	11,3	70,0	Ø 10,0	25
16969ZG91	46,0	23,0	25,0	6,4	17,5	13,5	95,0	Ø 6,0	25
16970ZG91	45,5	23,0	25,0	8,4	17,5	13,5	95,0	Ø 8,0	25
16964ZG91	47,0	23,0	25,0	10,5	17,5	13,5	95,0	Ø 10,0	25
16933ZG91	53,0	26,0	29,0	10,5	20,0	15,5	120,0	Ø 10,0	25
16937ZG91	60,0	26,0	35,0	21,0	20,0	15,5	120,0	Ø 20,0	10
16938ZG91	50,5	26,0	29,0	8,4	20,0	15,5	120,0	Ø 8,0	25
16936ZG91	55,0	26,0	29,0	17,0	20,0	15,5	120,0	Ø 16,0	25
16934ZG91	52,5	26,0	29,0	13,0	20,0	15,5	120,0	Ø 12,0	25
16935ZG91	53,5	26,0	29,0	15,0	20,0	15,5	120,0	Ø 14,0	25
16942ZG91	58,0	29,0	31,0	17,0	21,3	16,8	150,0	16,0	10
16943ZG91	63,0	29,0	35,0	21,0	21,3	16,8	150,0	20,0	10
16941ZG91	57,0	29,0	31,0	15,0	21,3	16,8	150,0	14,0	10
16939ZG91	56,5	29,0	31,0	10,5	21,3	16,8	150,0	10,0	10
16944ZG91	55,5	29,0	31,0	8,4	21,3	16,8	150,0	8,0	10
16949ZG91	66,0	30,0	35,0	21,0	24,0	19,0	185,0	20,0	10
16948ZG91	63,0	30,0	35,0	17,0	24,0	19,0	185,0	16,0	10

Code	A	B	C	D	E	F	Section mm2	Mounting hole	MOQ-Pcs
16947ZG91	61,0	30,0	35,0	15,0	24,0	19,0	185,0	14,0	10
16946ZG91	58,5	30,0	35,0	13,0	24,0	19,0	185,0	12,0	10
16945ZG91	59,0	30,0	35,0	10,5	24,0	19,0	185,0	10,0	10
16950ZG91	58,0	30,0	35,0	8,4	24,0	19,0	185,0	8,0	10
16973ZG91	71,0	35,0	39,0	15,0	27,3	21,1	240,0	14,0	10
16972ZG91	69,0	35,0	39,0	13,0	27,3	21,1	240,0	12,0	10
16971ZG91	69,0	35,0	39,0	10,5	27,3	21,1	240,0	10,0	10
16974ZG91	71,5	35,0	39,0	17,0	27,3	21,1	240,0	16,0	10
16975ZG91	73,0	35,0	39,0	21,0	27,3	21,1	240,0	20,0	10
16976ZG91	69,0	35,0	39,0	8,4	27,3	21,1	240,0	8,0	10
16977ZG91	79,5	42,0	44,0	10,5	30,0	24,0	300,0	10,0	5
16978ZG91	82,0	42,0	44,0	13,0	30,0	24,0	300,0	Ø 12,0	5
16979ZG91	84,0	42,0	44,0	15,0	30,0	24,0	300,0	Ø 14,0	5
16980ZG91	85,0	42,0	44,0	17,0	30,0	24,0	300,0	Ø 16,0	5
16981ZG91	85,0	42,0	44,0	21,0	30,0	24,0	300,0	Ø 20,0	5
16985ZG91	94,0	42,0	51,0	17,0	35,0	27,0	400,0	Ø 16,0	5
16982ZG91	94,0	42,0	51,0	10,5	35,0	27,0	400,0	Ø 10,0	5
16983ZG91	94,0	42,0	51,0	13,0	35,0	27,0	400,0	Ø 12,0	5
16986ZG91	94,0	42,0	51,0	21,0	35,0	27,0	400,0	Ø 20,0	5
16984ZG91	94,0	42,0	51,0	15,0	35,0	27,0	400,0	Ø 14,0	5
16989ZG91	113,0	70,0	55,5	21,0	38,0	31,0	500,0	Ø 20,0	5
16988ZG91	113,0	70,0	55,5	17,0	38,0	31,0	500,0	Ø 16,0	5
16987ZG91	113,0	70,0	55,5	13,0	38,0	31,0	500,0	Ø 12,0	5
16991ZG91	113,0	70,0	61,0	21,0	41,0	34,0	630,0	Ø 20,0	5
16990ZG91	113,0	70,0	61,0	17,0	41,0	34,0	630,0	Ø 16,0	5