

# INSULATING PA 6.6 AND BRASS P.C.B. SPACERS



## Technical description

**Body Material:** PA 6.6

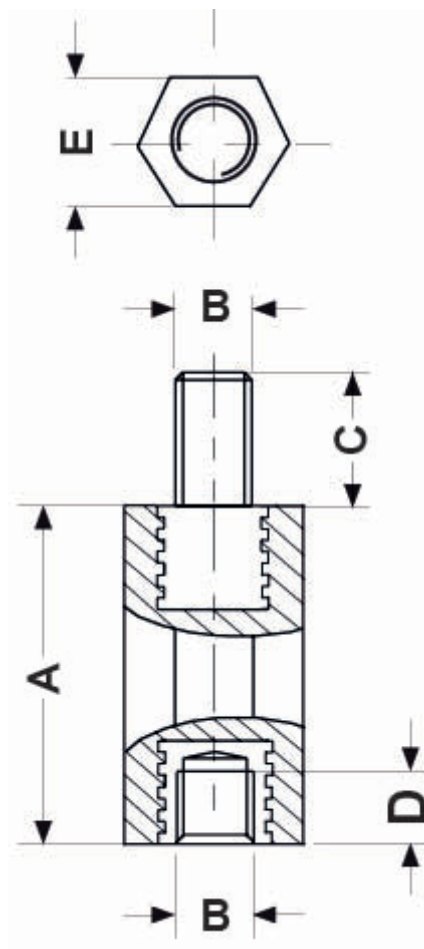
**Thread insert Material:** Brass nikel plated

**Colour:** See table

**Flammability:** HB (UL94)

**Working temperature:** -35°C ~ +85°C

All dimensions are in mm



| Code          | A    | B    | C    | D    | E    | Colour  | MOQ-Pcs |
|---------------|------|------|------|------|------|---------|---------|
| 10493AA0215.0 | 15,0 | M2.5 | 6,0  | 6,0  | 6,0  | Bianco  | 100     |
| 10493AA0220.0 | 20,0 | M2.5 | 6,0  | 6,0  | 6,0  | Bianco  | 100     |
| 10493AA0225.0 | 25,0 | M2.5 | 6,0  | 6,0  | 6,0  | Bianco  | 100     |
| 10493AA0230.0 | 30,0 | M2.5 | 6,0  | 6,0  | 6,0  | Bianco  | 100     |
| 10493AA0235.0 | 35,0 | M2.5 | 6,0  | 6,0  | 6,0  | Bianco  | 100     |
| 10493AA0240.0 | 40,0 | M2.5 | 6,0  | 6,0  | 6,0  | Bianco  | 100     |
| 10493AA0218.0 | 18,0 | M2.5 | 6,0  | 6,0  | 6,0  | Bianco  | 100     |
| 7614AA0240.0  | 40,0 | M3   | 8,0  | 6,0  | 6,0  | Bianco  | 100     |
| 7614AA0220.0  | 20,0 | M3   | 8,0  | 6,0  | 6,0  | Bianco  | 100     |
| 7614AA0225.0  | 25,0 | M3   | 8,0  | 6,0  | 6,0  | Bianco  | 100     |
| 7614AA0230.0  | 30,0 | M3   | 8,0  | 6,0  | 6,0  | Bianco  | 100     |
| 7614AA0235.0  | 35,0 | M3   | 8,0  | 6,0  | 6,0  | Bianco  | 100     |
| 7614AA0218.0  | 18,0 | M3   | 8,0  | 6,0  | 6,0  | Bianco  | 100     |
| 7614AA0215.0  | 15,0 | M3   | 8,0  | 6,0  | 6,0  | Bianco  | 100     |
| 7615AA0215.0  | 15,0 | M4   | 8,0  | 6,0  | 8,0  | Bianco  | 100     |
| 7615AA0218.0  | 18,0 | M4   | 8,0  | 6,0  | 8,0  | Bianco  | 100     |
| 7615AA0225.0  | 25,0 | M4   | 8,0  | 6,0  | 8,0  | Bianco  | 100     |
| 7615AA0230.0  | 30,0 | M4   | 8,0  | 6,0  | 8,0  | Bianco  | 100     |
| 7615AA0235.0  | 35,0 | M4   | 8,0  | 6,0  | 8,0  | Bianco  | 100     |
| 7615AA0220.0  | 20,0 | M4   | 8,0  | 6,0  | 8,0  | Bianco  | 100     |
| 7615AA0240.0  | 40,0 | M4   | 8,0  | 6,0  | 8,0  | Bianco  | 100     |
| 10496AA0220.0 | 20,0 | M5   | 10,0 | 6,0  | 10,0 | Bianco  | 100     |
| 10496AA0225.0 | 25,0 | M5   | 10,0 | 6,0  | 10,0 | Bianco  | 100     |
| 10496AA0218.0 | 18,0 | M5   | 10,0 | 6,0  | 10,0 | Bianco  | 100     |
| 10496AA0215.0 | 15,0 | M5   | 10,0 | 6,0  | 10,0 | Bianco  | 100     |
| 10497AA0245.0 | 45,0 | M6   | 12,0 | 10,0 | 13,0 | Natural | 100     |
| 10497AA0250.0 | 50,0 | M6   | 12,0 | 10,0 | 13,0 | Natural | 100     |
| 10497AA0240.0 | 40,0 | M6   | 12,0 | 10,0 | 13,0 | Natural | 100     |
| 10497AA0235.0 | 35,0 | M6   | 12,0 | 10,0 | 13,0 | Natural | 100     |
| 10497AA0230.0 | 30,0 | M6   | 12,0 | 10,0 | 13,0 | Natural | 100     |
| 10497AA0220.0 | 20,0 | M6   | 12,0 | 10,0 | 13,0 | Natural | 100     |

| Code          | A    | B  | C    | D    | E    | Colour  | MOQ-Pcs |
|---------------|------|----|------|------|------|---------|---------|
| 10498AA0245.0 | 45,0 | M8 | 14,0 | 10,0 | 15,0 | Natural | 100     |
| 10498AA0250.0 | 50,0 | M8 | 14,0 | 10,0 | 15,0 | Natural | 100     |
| 10498AA0240.0 | 40,0 | M8 | 14,0 | 10,0 | 15,0 | Natural | 100     |
| 10498AA0235.0 | 35,0 | M8 | 14,0 | 10,0 | 15,0 | Natural | 100     |
| 10498AA0220.0 | 20,0 | M8 | 14,0 | 10,0 | 15,0 | Natural | 100     |
| 10498AA0230.0 | 30,0 | M8 | 14,0 | 10,0 | 15,0 | Natural | 100     |