

# INSULATED COPPER TERMINAL LUGS



## Technical description

**Terminal material:** Copper CU-HCP 99,9% tinned

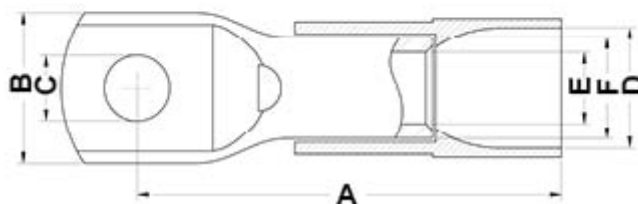
**Insulated Cable Lugs:** 10 - 150 mm<sup>2</sup>

**Insulation:** PA 6.6

**Colour:** black

**With inspection Hole**

**All dimensions are in mm**



Code	A	B	C	D	E	F	Section mm2	Mounting hole	MOQ-Pcs
17389ZG91	32,5	10,0	4,3	10,0	4,3	6,7	10,0	4,0	50
17390ZG91	33,5	10,0	5,3	10,0	4,3	6,7	10,0	5,0	50
17391ZG91	35,5	11,0	6,4	10,0	4,3	6,7	10,0	6,0	50
17392ZG91	38,0	15,0	8,4	10,0	4,3	6,7	10,0	8,0	50

Code	A	B	C	D	E	F	Section mm2	Mounting hole	MOQ-Pcs
17393ZG91	40,5	18,0	10,5	10,0	4,3	6,7	10,0	10,0	50
17394ZG91	41,5	19,0	13,0	10,0	4,3	6,7	10,0	12,0	50
17395ZG91	36,5	12,0	5,3	11,0	5,4	7,8	16,0	5,0	50
17396ZG91	38,5	12,0	6,4	11,0	5,4	7,8	16,0	6,0	50
17397ZG91	40,5	15,0	8,4	11,0	5,4	7,8	16,0	8,0	50
17398ZG91	43,0	18,0	10,5	11,0	5,4	7,8	16,0	10,0	50
17399ZG91	44,0	20,0	13,0	11,0	5,4	7,8	16,0	12,0	50
17400ZG91	39,5	14,0	5,3	13,0	6,9	9,4	25,0	5,0	50
17401ZG91	41,5	14,0	6,4	13,0	6,9	9,4	25,0	6,0	50
17402ZG91	43,5	15,0	8,4	13,0	6,9	9,4	25,0	8,0	50
17403ZG91	46,0	18,0	10,5	13,0	6,9	9,4	25,0	10,0	50
17404ZG91	47,0	20,0	13,0	13,0	6,9	9,4	25,0	12,0	50
17405ZG91	49,0	22,0	15,0	13,0	6,9	9,4	25,0	14,0	50
17406ZG91	49,5	16,5	5,3	16,0	8,3	11,3	35,0	5,0	25
17407ZG91	49,5	16,5	6,4	16,0	8,3	11,3	35,0	6,0	25
17408ZG91	50,0	16,5	8,4	16,0	8,3	11,3	35,0	8,0	25
17409ZG91	52,5	18,0	10,5	16,0	8,3	11,3	35,0	10,0	25
17410ZG91	53,5	20,0	13,0	16,0	8,3	11,3	35,0	12,0	25
17411ZG91	56,0	22,0	15,0	16,0	8,3	11,3	35,0	14,0	25
17412ZG91	58,5	26,0	17,0	16,0	8,3	11,3	35,0	16,0	25
17413ZG91	53,0	19,0	6,4	18,0	9,6	13,1	50,0	6,0	25
17414ZG91	54,0	19,0	8,4	18,0	9,6	13,1	50,0	8,0	25
17415ZG91	56,0	20,0	10,5	18,0	9,6	13,1	50,0	10,0	25
17416ZG91	57,5	23,0	13,0	18,0	9,6	13,1	50,0	12,0	25
17417ZG91	59,5	25,0	15,0	18,0	9,6	13,1	50,0	14,0	25
17418ZG91	62,5	27,0	17,0	18,0	9,6	13,1	50,0	16,0	25
17419ZG91	67,0	28,0	21,0	18,0	9,6	13,1	50,0	20,0	25
17420ZG91	63,0	22,5	6,4	21,0	11,3	14,7	70,0	6,0	25
17421ZG91	63,0	22,5	8,4	21,0	11,3	14,7	70,0	8,0	25
17422ZG91	64,5	22,5	10,5	21,0	11,3	14,7	70,0	10,0	25
17423ZG91	65,5	23,0	13,0	21,0	11,3	14,7	70,0	12,0	25

Code	A	B	C	D	E	F	Section mm2	Mounting hole	MOQ-Pcs
17424ZG91	68,0	26,0	15,0	21,0	11,3	14,7	70,0	14,0	25
17425ZG91	70,5	28,0	17,0	21,0	11,3	14,7	70,0	16,0	25
17426ZG91	69,0	25,0	6,4	23,0	13,5	17,5	95,0	6,0	50
17427ZG91	68,5	25,0	8,4	23,0	13,5	17,5	95,0	8,0	50
17428ZG91	70,0	25,0	10,5	23,0	13,5	17,5	95,0	10,0	50
17429ZG91	70,0	26,0	13,0	23,0	13,5	17,5	95,0	12,0	50
17430ZG91	72,0	26,0	15,0	23,0	13,5	17,5	95,0	14,0	50
17431ZG91	73,0	28,0	17,0	23,0	13,5	17,5	95,0	16,0	50
17432ZG91	77,5	31,0	21,0	23,0	13,5	17,5	95,0	20,0	50
17433ZG91	72,5	29,0	8,4	26,0	15,5	20,0	120,0	8,0	50
17434ZG91	75,0	29,0	10,5	26,0	15,5	20,0	120,0	10,0	50
17435ZG91	74,5	29,0	13,0	26,0	15,5	20,0	120,0	12,0	50
17436ZG91	75,5	29,0	15,5	26,0	15,5	20,0	120,0	14,0	50
17437ZG91	77,0	29,0	17,0	26,0	15,5	20,0	120,0	16,0	50
17438ZG91	82,0	35,0	21,0	26,0	15,5	20,0	120,0	20,0	50
17439ZG91	80,5	31,0	8,4	29,0	16,8	21,3	150,0	8,0	25
17440ZG91	81,5	31,0	10,5	29,0	16,8	21,3	150,0	10,0	25
17441ZG91	81,0	31,0	13,0	29,0	16,8	21,3	150,0	12,0	25
17442ZG91	82,0	31,0	15,0	29,0	16,8	21,3	150,0	14,0	25
17443ZG91	83,0	31,0	17,0	29,0	16,8	21,3	150,0	16,0	25
17444ZG91	88,0	35,0	21,0	29,0	16,8	21,3	150,0	20,0	25