

FEET IN POLYETHYLENE



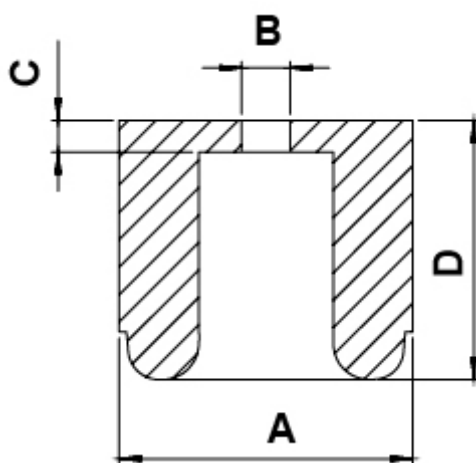
Technical description

Material: LD- PE

Colour: Black

Operating temperature: -30°C ~ +60°C

All dimensions are in mm.



Code	A	B	C	D	Material	MOQ-Pcs
1019EA01	24,0	4,0	6,0	21,0	PE-LD	1.000
1020EA01	24,0	5,0	6,0	21,0	PE-LD	1.000
4707EA01	24,0	6,0	6,0	21,0	PE-LD	1.000
4708EA01	24,0	7,0	6,0	21,0	PE-LD	1.000