

# WEICH-PVC-DURCHFÜHRUNGEN



## Technische Beschreibung

**Material:** PVC (Auf Anfrage auch in Material TPE lieferbar)

**Temperaturbereich:**

- **PVC:** -25° ~ +60°C

- **TPE:** -28°C ~ +90°C

**Farbe:** Schwarz (Auf Anfrage auch in Farbe: Weiß lieferbar)

Auf Anfrage auch in UL zertifizierten TPE lieferbar

Alle Maße in mm

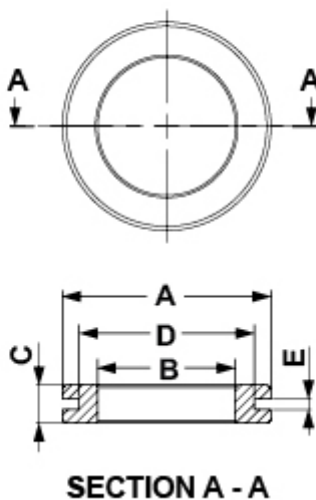
**new**

**Su richiesta speciale fornibile con materiale certificato UL**

*On special request available with UL certified material*

*Auf Anfrage mit zertifizierten UL Material verfügbar*

*Disponible con material certificado UL bajo pedido*



Artikel	A	B	C	D	E	VPE-Stckz.
4682CA01	8,0	3,2	6,4	4,8	1,6	1.000
4575CA01	10,0	3,0	6,0	6,0	2,0	1.000
4495CA01	10,0	5,0	5,5	6,0	1,5	1.000
0860CA01	10,0	5,0	6,0	6,0	2,0	1.000
0859CA01	10,0	4,5	6,0	6,0	2,0	1.000
0858CA01	10,0	4,0	6,0	6,0	2,0	1.000
0846CA01	10,0	5,0	7,0	6,0	3,0	1.000
0845CA01	10,0	4,5	7,0	6,0	3,0	1.000
0844CA01	10,0	4,0	7,0	6,0	3,0	1.000
4576CA01	10,0	3,0	7,0	6,0	3,0	1.000
0843CA01	10,0	3,5	7,0	6,0	3,0	1.000
4493CA01	10,0	4,0	5,5	6,0	1,5	1.000
4492CA01	10,0	3,5	5,5	6,0	1,5	1.000
4491CA01	10,0	3,0	5,5	6,0	1,5	1.000
4494CA01	10,0	4,5	5,5	6,0	1,5	1.000
4686CA01	10,0	4,0	8,0	7,5	3,2	1.000
4581CA01	12,0	5,0	6,4	8,0	2,0	1.000
1268CA01	12,0	6,0	7,0	8,0	3,5	1.000
1266CA01	12,0	5,0	7,0	8,0	3,5	1.000
1264CA01	12,0	4,0	7,0	8,0	3,5	1.000
4583CA01	12,0	3,0	7,0	8,0	3,0	1.000
4582CA01	12,0	6,0	7,0	8,0	2,0	1.000
0874CA01	14,0	6,0	6,0	8,0	1,0	1.000
4580CA01	12,0	4,0	7,0	8,0	2,0	1.000
4579CA01	12,0	3,0	7,0	8,0	2,0	1.000
1260CA01	12,0	4,0	8,0	8,0	1,0	1.000
4578CA01	14,0	6,0	8,0	8,0	3,0	1.000
1249CA01	12,0	5,0	7,0	8,0	2,5	1.000
4585CA01	12,0	5,0	7,0	8,0	3,0	1.000
4577CA01	14,0	6,0	7,0	8,0	2,0	1.000
4584CA01	12,0	4,0	7,0	8,0	3,0	1.000

Artikel	A	B	C	D	E	VPE-Stckz.
1262CA01	12,0	3,0	7,0	8,0	3,5	1.000
4586CA01	12,0	6,0	7,0	8,0	3,0	1.000
1247CA01	14,0	6,0	7,0	8,5	2,5	1.000
2418CA01	14,0	3,0	6,5	9,0	3,5	1.000
12820CA01	12,0	5,5	7,0	9,0	3,0	1.000
12819CA01	12,0	6,0	7,0	9,0	3,0	1.000
12818CA01	12,0	6,0	5,0	9,0	1,0	1.000
2423CA01	14,0	8,0	6,5	9,0	3,5	1.000
2422CA01	14,0	7,0	6,5	9,0	3,5	1.000
2421CA01	14,0	6,0	6,5	9,0	3,5	1.000
2420CA01	14,0	5,0	6,5	9,0	3,5	1.000
2419CA01	14,0	4,0	6,5	9,0	3,5	1.000
2417CA01	14,0	2,0	6,5	9,0	3,5	1.000
4685CA01	15,0	6,0	13,0	9,5	3,0	1.000
4683CA01	15,0	6,0	11,0	9,5	1,0	1.000
4684CA01	15,0	6,0	12,0	9,5	2,0	1.000
0864CA01	16,0	7,0	7,0	10,0	1,5	1.000
4596CA01	14,0	7,0	10,0	10,0	4,0	1.000
4597CA01	14,0	8,0	9,0	10,0	3,0	1.000
4598CA01	14,0	8,0	10,0	10,0	4,0	1.000
2291CA01	14,0	8,0	8,5	10,0	2,5	1.000
2401CA01	15,0	7,2	6,3	10,0	1,5	1.000
2400CA01	15,0	7,0	6,0	10,0	1,5	1.000
2399CA01	15,0	6,0	6,0	10,0	1,5	1.000
2398CA01	15,0	5,0	6,0	10,0	1,5	1.000
2397CA01	15,0	4,0	6,0	10,0	1,5	1.000
4595CA01	14,0	7,0	9,0	10,0	3,0	1.000
4594CA01	14,0	6,0	10,0	10,0	4,0	1.000
4593CA01	14,0	6,0	9,0	10,0	3,0	1.000
0887CA01	14,0	8,0	8,0	10,0	2,0	1.000
4587CA01	14,0	3,0	9,0	10,0	3,0	1.000

Artikel	A	B	C	D	E	VPE-Stckz.
4588CA01	14,0	3,0	10,0	10,0	4,0	1.000
4589CA01	14,0	4,0	9,0	10,0	3,0	1.000
4590CA01	14,0	4,0	10,0	10,0	4,0	1.000
4591CA01	14,0	5,0	9,0	10,0	3,0	1.000
4592CA01	14,0	5,0	10,0	10,0	4,0	1.000
0849CA01	14,5	8,0	6,0	10,0	1,5	1.000
2395CA01	15,0	2,0	6,0	10,0	1,5	1.000
2396CA01	15,0	3,0	6,0	10,0	1,5	1.000
0886CA01	14,0	7,0	8,0	10,0	2,0	1.000
0885CA01	14,0	6,0	8,0	10,0	2,0	1.000
0884CA01	14,0	5,0	8,0	10,0	2,0	1.000
0883CA01	14,0	4,0	8,0	10,0	2,0	1.000
0882CA01	14,0	3,0	8,0	10,0	2,0	1.000
4601CA01	16,0	4,0	7,0	11,0	1,5	1.000
4610CA01	16,0	8,0	8,0	11,0	2,5	1.000
4611CA01	16,0	9,0	7,0	11,0	1,5	1.000
4609CA01	16,0	8,0	7,0	11,0	1,5	1.000
4606CA01	16,0	6,0	8,0	11,0	2,5	1.000
4608CA01	16,0	7,0	8,0	11,0	2,5	1.000
4602CA01	16,0	4,0	8,0	11,0	2,5	1.000
4603CA01	16,0	5,0	7,0	11,0	1,5	1.000
4604CA01	16,0	5,0	8,0	11,0	2,5	1.000
4605CA01	16,0	6,0	7,0	11,0	1,5	1.000
4607CA01	16,0	7,0	7,0	11,0	1,5	1.000
0823CA01	16,0	3,0	6,0	11,0	0,5	1.000
4599CA01	16,0	3,0	7,0	11,0	1,5	1.000
0893CA01	15,0	6,0	7,5	11,0	1,5	1.000
2340CA01	15,0	8,0	7,5	11,0	1,5	1.000
0895CA01	15,0	7,0	7,5	11,0	1,5	1.000
0889CA01	15,0	4,0	7,5	11,0	1,5	1.000
0829CA01	16,0	9,0	6,0	11,0	0,5	1.000

Artikel	A	B	C	D	E	VPE-Stckz.
0891CA01	15,0	5,0	7,5	11,0	1,5	1.000
0828CA01	16,0	8,0	6,0	11,0	0,5	1.000
4600CA01	16,0	3,0	8,0	11,0	2,5	1.000
4612CA01	16,0	9,0	8,0	11,0	2,5	1.000
2342CA01	15,0	9,0	7,5	11,0	1,5	1.000
0826CA01	16,0	6,0	6,0	11,0	0,5	1.000
0825CA01	16,0	5,0	6,0	11,0	0,5	1.000
0824CA01	16,0	4,0	6,0	11,0	0,5	1.000
0827CA01	16,0	7,0	6,0	11,0	0,5	1.000
4626CA01	14,5	10,0	12,0	11,5	4,0	1.000
4619CA01	14,5	7,0	10,0	11,5	2,0	1.000
4618CA01	14,5	6,0	12,0	11,5	4,0	1.000
2391CA01	16,0	7,0	8,0	11,5	3,0	1.000
4617CA01	14,5	6,0	10,0	11,5	2,0	1.000
4623CA01	14,5	9,0	10,0	11,5	2,0	1.000
4625CA01	14,5	10,0	10,0	11,5	2,0	1.000
4624CA01	14,5	9,0	12,0	11,5	4,0	1.000
0862CA01	14,5	8,5	8,0	11,5	1,2	1.000
4622CA01	14,5	8,0	12,0	11,5	4,0	1.000
4616CA01	14,5	5,0	12,0	11,5	4,0	1.000
2392CA01	16,0	8,0	8,0	11,5	3,0	1.000
1252CA01	14,5	6,0	11,0	11,5	3,0	1.000
4615CA01	14,5	5,0	10,0	11,5	2,0	1.000
1250CA01	14,5	4,0	11,0	11,5	3,0	1.000
1251CA01	14,5	5,0	11,0	11,5	3,0	1.000
4621CA01	14,5	8,0	10,0	11,5	2,0	1.000
1253CA01	14,5	7,0	11,0	11,5	3,0	1.000
1254CA01	14,5	8,0	11,0	11,5	3,0	1.000
1255CA01	14,5	9,0	11,0	11,5	3,0	1.000
1256CA01	14,5	10,0	11,0	11,5	3,0	1.000
4614CA01	14,5	4,0	12,0	11,5	4,0	1.000

Artikel	A	B	C	D	E	VPE-Stckz.
4613CA01	14,5	4,0	10,0	11,5	2,0	1.000
2388CA01	16,0	4,0	8,0	11,5	3,0	1.000
2389CA01	16,0	5,0	8,0	11,5	3,0	1.000
2390CA01	16,0	6,0	8,0	11,5	3,0	1.000
4620CA01	14,5	7,0	12,0	11,5	4,0	1.000
4496CA01	18,0	7,0	11,5	12,0	1,5	1.000
0875CA01	17,0	4,0	7,0	12,0	1,5	1.000
0876CA01	17,0	5,0	7,0	12,0	1,5	1.000
0877CA01	17,0	6,0	7,0	12,0	1,5	1.000
0878CA01	17,0	7,0	7,0	12,0	1,5	1.000
0879CA01	17,0	8,0	7,0	12,0	1,5	1.000
0880CA01	17,0	9,0	7,0	12,0	1,5	1.000
0881CA01	17,0	10,0	7,0	12,0	1,5	1.000
1261CA01	16,0	9,0	6,0	12,0	2,0	1.000
2370CA01	18,0	7,0	10,0	12,0	3,0	1.000
2371CA01	18,0	8,0	10,0	12,0	3,0	1.000
2372CA01	18,0	9,0	10,0	12,0	3,0	1.000
2373CA01	18,0	10,0	10,0	12,0	3,0	1.000
14862CA01						
4627CA01	17,5	10,0	8,0	13,5	3,0	1.000
4628CA01	17,5	10,0	9,0	13,5	4,0	1.000
0822CA01	17,5	10,0	7,0	13,5	2,0	1.000
8099CA01	18,0	8,0	6,0	14,0	1,0	1.000
1248CA01	20,0	12,0	9,0	14,0	3,0	1.000
0836CA01	20,5	10,0	7,0	15,0	2,0	1.000
4629CA01	18,5	7,0	9,0	15,0	2,5	1.000
4630CA01	18,5	7,0	10,0	15,0	3,5	1.000
4631CA01	18,5	8,0	9,0	15,0	2,5	1.000
4632CA01	18,5	8,0	10,0	15,0	3,5	1.000
4633CA01	18,5	9,0	9,0	15,0	2,5	1.000
4634CA01	18,5	9,0	10,0	15,0	3,5	1.000

Artikel	A	B	C	D	E	VPE-Stckz.
4635CA01	18,5	10,0	9,0	15,0	2,5	1.000
4636CA01	18,5	10,0	10,0	15,0	3,5	1.000
4637CA01	18,5	11,0	9,0	15,0	2,5	1.000
4639CA01	18,5	12,0	9,0	15,0	2,5	1.000
4638CA01	18,5	11,0	10,0	15,0	3,5	1.000
0852CA01	18,5	9,0	8,0	15,0	1,5	1.000
4640CA01	18,5	12,0	10,0	15,0	3,5	1.000
4641CA01	18,5	13,0	9,0	15,0	2,5	1.000
4642CA01	18,5	13,0	10,0	15,0	3,5	1.000
4643CA01	19,0	12,0	9,0	15,0	2,5	1.000
0834CA01	20,5	9,0	7,0	15,0	2,0	1.000
0850CA01	18,5	7,0	8,0	15,0	1,5	1.000
0842CA01	20,5	13,0	7,0	15,0	2,0	1.000
0840CA01	20,5	12,0	7,0	15,0	2,0	1.000
0838CA01	20,5	11,0	7,0	15,0	2,0	1.000
0851CA01	18,5	8,0	8,0	15,0	1,5	1.000
4644CA01	19,0	12,0	10,0	15,0	3,5	1.000
0853CA01	18,5	10,0	8,0	15,0	1,5	1.000
0854CA01	18,5	11,0	8,0	15,0	1,5	1.000
0855CA01	18,5	12,0	8,0	15,0	1,5	1.000
0856CA01	18,5	13,0	8,0	15,0	1,5	1.000
0830CA01	20,5	7,0	7,0	15,0	2,0	1.000
2407CA01	19,0	12,0	8,0	15,0	1,5	1.000
0832CA01	20,5	8,0	7,0	15,0	2,0	1.000
4652CA01	24,0	13,0	9,5	18,0	4,0	1.000
4653CA01	24,0	14,0	8,5	18,0	3,0	1.000
4654CA01	24,0	14,0	9,5	18,0	4,0	1.000
4655CA01	24,0	15,0	8,5	18,0	3,0	1.000
4658CA01	24,0	16,0	9,5	18,0	4,0	1.000
4656CA01	24,0	15,0	9,5	18,0	4,0	1.000
4650CA01	24,0	12,0	9,5	18,0	4,0	1.000

Artikel	A	B	C	D	E	VPE-Stckz.
1201CA01	24,0	16,0	7,5	18,0	2,0	1.000
2411CA01	23,0	12,0	8,0	18,0	2,0	1.000
2412CA01	23,0	13,0	8,0	18,0	2,0	1.000
2413CA01	23,0	14,0	8,0	18,0	2,0	1.000
2414CA01	23,0	15,0	8,0	18,0	2,0	1.000
2415CA01	23,0	16,0	8,0	18,0	2,0	1.000
4651CA01	24,0	13,0	8,5	18,0	3,0	1.000
4657CA01	24,0	16,0	8,5	18,0	3,0	1.000
4649CA01	24,0	12,0	8,5	18,0	3,0	1.000
0873CA01	24,0	15,0	7,5	18,0	2,0	1.000
0868CA01	24,0	10,0	7,5	18,0	2,0	1.000
0869CA01	24,0	11,0	7,5	18,0	2,0	1.000
0870CA01	24,0	12,0	7,5	18,0	2,0	1.000
0871CA01	24,0	13,0	7,5	18,0	2,0	1.000
0872CA01	24,0	14,0	7,5	18,0	2,0	1.000
4648CA01	24,0	11,0	9,5	18,0	4,0	1.000
4647CA01	24,0	11,0	8,5	18,0	3,0	1.000
2410CA01	23,0	11,0	8,0	18,0	2,0	1.000
4646CA01	24,0	10,0	9,5	18,0	4,0	1.000
4645CA01	24,0	10,0	8,5	18,0	3,0	1.000
2409CA01	23,0	10,0	8,0	18,0	2,0	1.000
4668CA01	28,0	16,0	10,0	21,0	4,0	1.000
0865CA01	28,0	16,0	8,0	21,0	2,0	1.000
4667CA01	28,0	16,0	9,0	21,0	3,0	1.000
4679CA01	28,0	19,0	10,0	23,0	4,0	1.000
4678CA01	28,0	19,0	9,0	23,0	3,0	1.000
4677CA01	28,0	19,0	8,0	23,0	2,0	1.000
4673CA01	32,0	17,5	9,5	24,0	3,0	1.000
4676CA01	32,0	19,5	10,5	24,0	4,0	1.000
4675CA01	32,0	19,5	9,5	24,0	3,0	1.000
4674CA01	32,0	17,5	10,5	24,0	4,0	1.000



Artikel	A	B	C	D	E	VPE-Stckz.
4672CA01	32,0	17,5	8,5	24,0	2,0	1.000
4671CA01	32,0	15,5	10,5	24,0	4,0	1.000
4670CA01	32,0	15,5	9,5	24,0	3,0	1.000
4669CA01	32,0	15,5	8,5	24,0	2,0	1.000
1258CA01	32,0	19,5	8,5	24,0	2,0	1.000
4659CA01	35,0	18,0	8,5	26,0	2,0	1.000
4666CA01	35,0	22,0	10,5	26,0	4,0	1.000
4665CA01	35,0	22,0	9,5	26,0	3,0	1.000
4664CA01	35,0	20,0	10,5	26,0	4,0	1.000
4663CA01	35,0	20,0	9,5	26,0	3,0	1.000
4662CA01	35,0	20,0	8,5	26,0	2,0	1.000
4661CA01	35,0	18,0	10,5	26,0	4,0	1.000
4660CA01	35,0	18,0	9,5	26,0	3,0	1.000
1257CA01	35,0	22,0	8,5	26,0	2,0	1.000
5742CA01	35,0	21,0	8,5	28,0	2,0	1.000
4499CA01	39,0	28,0	8,0	34,0	3,0	1.000
4498CA01	39,0	28,0	7,0	34,0	2,0	1.000
4500CA01	39,0	28,0	9,0	34,0	4,0	1.000
4681CA01	45,0	35,0	9,0	39,0	4,0	1.000
4680CA01	45,0	35,0	8,0	39,0	3,0	1.000
1259CA01	45,0	35,0	7,0	39,0	2,0	1.000
2408CA01	94,0	78,0	6,0	82,0	3,0	1.000