

# KABELDURCHFÜHRUNG BUND BEIDSEITIG



## Technische Beschreibung

**Material:** PVC (Auf Anfrage auch in Material TPE lieferbar)

**Temperaturbereich:**

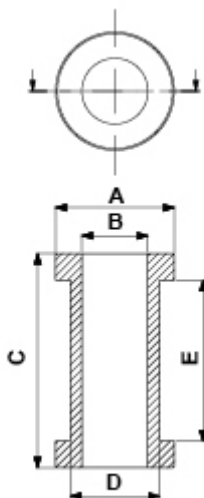
- **PVC:** -25° ~ +60°C

- **TPE:** -28°C ~ +90°C

**Farbe:** Schwarz (Auf Anfrage auch in Farbe: Weiß lieferbar)

Auf Anfrage auch in UL zertifizierten TPE lieferbar

Alle Maße in mm



Artikel	A	B	C	D	E	VPE-Stckz.
1270CA01	15,0	8,0	12,0	10,0	6,0	1.000
1271CA01	13,5	4,0	25,0	10,0	19,0	1.000
1272CA01	13,5	5,0	25,0	10,0	19,0	1.000

Artikel	A	B	C	D	E	VPE-Stckz.
1273CA01	13,5	6,0	25,0	10,0	19,0	1.000
1274CA01	13,5	7,0	25,0	10,0	19,0	1.000
1275CA01	13,5	8,0	25,0	10,0	19,0	1.000
4687CA01	15,0	6,0	12,0	10,0	6,0	1.000
1278CA01	14,0	6,0	15,0	11,0	9,0	1.000
1280CA01	14,0	7,0	15,0	11,0	9,0	1.000
1282CA01	14,0	8,0	15,0	11,0	9,0	1.000
2362CA01	17,5	10,0	13,5	11,5	8,0	1.000
1288CA01	20,0	9,0	10,0	13,0	5,0	1.000
1284CA01	16,0	4,0	13,0	13,0	7,0	1.000
1283CA01	16,0	2,0	13,0	13,0	7,0	1.000
5062CA01	16,0	6,0	13,0	13,0	7,0	1.000
5064CA01	16,0	10,0	13,0	13,0	7,0	1.000
5063CA01	16,0	8,0	13,0	13,0	7,0	1.000
2380CA01	16,0	11,0	14,0	13,5	10,0	1.000
2379CA01	16,0	10,0	14,0	13,5	10,0	1.000
2374CA01	16,0	5,0	14,0	13,5	10,0	1.000
2375CA01	16,0	6,0	14,0	13,5	10,0	1.000
2376CA01	16,0	7,0	14,0	13,5	10,0	1.000
2377CA01	16,0	8,0	14,0	13,5	10,0	1.000
2378CA01	16,0	9,0	14,0	13,5	10,0	1.000
2354CA01	21,0	11,0	10,0	15,0	5,0	1.000
2355CA01	21,0	12,0	10,0	15,0	5,0	1.000
2353CA01	21,0	10,0	10,0	15,0	5,0	1.000
2352CA01	21,0	9,0	10,0	15,0	5,0	1.000
2351CA01	21,0	8,0	10,0	15,0	5,0	1.000
2350CA01	21,0	7,0	10,0	15,0	5,0	1.000
2349CA01	21,0	6,0	10,0	15,0	5,0	1.000
2368CA01	26,0	17,0	14,0	21,0	7,0	1.000
2369CA01	26,0	18,0	14,0	21,0	7,0	1.000
2367CA01	26,0	16,0	14,0	21,0	7,0	1.000

Artikel	A	B	C	D	E	VPE-Stckz.
2366CA01	26,0	15,0	14,0	21,0	7,0	1.000
2365CA01	26,0	14,0	14,0	21,0	7,0	1.000
2364CA01	26,0	13,0	14,0	21,0	7,0	1.000
2363CA01	26,0	12,0	14,0	21,0	7,0	1.000