

# BLINDLOCHABDECKUNG | BOHRUNG Ø 4,0 – 17,0 MM



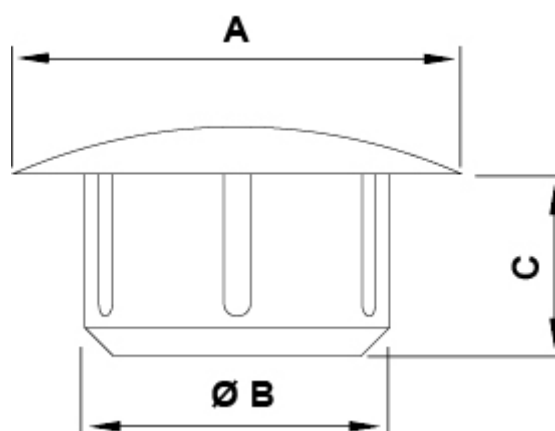
## Technische Beschreibung

**Material:** Polyethylen LD-PE

**Temperaturbereich:** -30°C ~ +60°C

**Farbe:** Schwarz

Alle Maße in mm



Artikel	A	B	C	Bohrung	VPE-Stckz.
9220EA01	13,0	4,0	6,0	Ø 4,0	1.000
9221EA01	8,0	5,0	6,0	Ø 5,0	1.000
9222EA01	11,0	5,0	6,0	Ø 5,0	1.000
9223EA01	13,0	5,0	6,0	Ø 5,0	1.000
9224EA01	13,0	6,0	6,0	Ø 6,0	1.000
9225EA01	13,0	7,0	6,0	Ø 7,0	1.000
9226EA01	13,0	8,0	6,0	Ø 8,0	1.000
9227EA01	15,0	8,0	6,0	Ø 8,0	1.000

Artikel	A	B	C	Bohrung	VPE-Stckz.
9228EA01	13,0	9,0	6,0	Ø 9,0	1.000
9229EA01	15,0	9,0	6,0	Ø 9,0	1.000
9230EA01	13,0	10,0	6,0	Ø 10,0	1.000
9231EA01	15,0	10,0	6,0	Ø 10,0	1.000
9232EA01	13,0	11,0	6,0	Ø 11,0	1.000
9233EA01	15,0	11,0	6,0	Ø 11,0	1.000
9234EA01	19,0	12,0	8,0	Ø 12,0	1.000
9235EA01	19,0	13,0	8,0	Ø 13,0	1.000
9236EA01	19,0	15,0	8,0	Ø 15,0	1.000
9237EA01	24,0	17,0	6,0	Ø 17,0	1.000