

ABSTANDSROLLEN AD 14,0 / ID 9,5



Technische Beschreibung

Material: PA 6 , 25%GV

Entflammbarkeit: HB (UL 94)

Farbe: schwarz **Temperaturbereich:** -35°C ~ +100°C

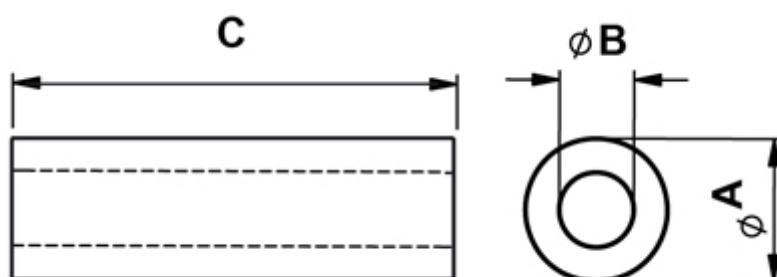
Alternativ:

Material: Polystyrol

Entflammbarkeit: HB (UL 94) **Farbe:** weiß

Temperaturbereich: -40°C ~ +70°C

Alle Maße sind in mm



| Artikel | A | B | C | VPE-Stckz. |
|---------------|------|-----|-----|------------|
| 10129BB0102.0 | 14,0 | 9,5 | 2,0 | 500 |
| 10129BB0103.0 | 14,0 | 9,5 | 3,0 | 500 |
| 10129BB0104.0 | 14,0 | 9,5 | 4,0 | 500 |
| 10129BB0105.0 | 14,0 | 9,5 | 5,0 | 500 |

| Artikel | A | B | C | VPE-Stckz. |
|---------------|------|-----|------|------------|
| 10129BB0106.0 | 14,0 | 9,5 | 6,0 | 500 |
| 10129BB0107.0 | 14,0 | 9,5 | 7,0 | 500 |
| 10129BB0108.0 | 14,0 | 9,5 | 8,0 | 500 |
| 10129BB0109.0 | 14,0 | 9,5 | 9,0 | 500 |
| 10129BB0110.0 | 14,0 | 9,5 | 10,0 | 500 |
| 10129BB0111.0 | 14,0 | 9,5 | 11,0 | 500 |
| 10129BB0112.0 | 14,0 | 9,5 | 12,0 | 500 |
| 10129BB0113.0 | 14,0 | 9,5 | 13,0 | 500 |
| 10129BB0114.0 | 14,0 | 9,5 | 14,0 | 500 |
| 10129BB0115.0 | 14,0 | 9,5 | 15,0 | 500 |
| 10129BB0116.0 | 14,0 | 9,5 | 16,0 | 500 |
| 10129BB0117.0 | 14,0 | 9,5 | 17,0 | 500 |
| 10129BB0118.0 | 14,0 | 9,5 | 18,0 | 500 |
| 10129BB0119.0 | 14,0 | 9,5 | 19,0 | 500 |
| 10129BB0120.0 | 14,0 | 9,5 | 20,0 | 500 |
| 10129BB0121.0 | 14,0 | 9,5 | 21,0 | 500 |
| 10129BB0122.0 | 14,0 | 9,5 | 22,0 | 500 |
| 10129BB0123.0 | 14,0 | 9,5 | 23,0 | 500 |
| 10129BB0124.0 | 14,0 | 9,5 | 24,0 | 500 |
| 10129BB0125.0 | 14,0 | 9,5 | 25,0 | 500 |
| 10129BB0126.0 | 14,0 | 9,5 | 26,0 | 500 |
| 10129BB0127.0 | 14,0 | 9,5 | 27,0 | 500 |
| 10129BB0128.0 | 14,0 | 9,5 | 28,0 | 500 |
| 10129BB0129.0 | 14,0 | 9,5 | 29,0 | 500 |
| 10129BB0130.0 | 14,0 | 9,5 | 30,0 | 500 |
| 10129BB0131.0 | 14,0 | 9,5 | 31,0 | 500 |
| 10129BB0132.0 | 14,0 | 9,5 | 32,0 | 500 |
| 10129BB0133.0 | 14,0 | 9,5 | 33,0 | 500 |
| 10129BB0134.0 | 14,0 | 9,5 | 34,0 | 500 |
| 10129BB0135.0 | 14,0 | 9,5 | 35,0 | 500 |
| 10129BB0136.0 | 14,0 | 9,5 | 36,0 | 500 |

| Artikel | A | B | C | VPE-Stckz. |
|---------------|------|-----|------|------------|
| 10129BB0137.0 | 14,0 | 9,5 | 37,0 | 500 |
| 10129BB0138.0 | 14,0 | 9,5 | 38,0 | 500 |
| 10129BB0139.0 | 14,0 | 9,5 | 39,0 | 500 |
| 10129BB0140.0 | 14,0 | 9,5 | 40,0 | 500 |
| 10129BB0141.0 | 14,0 | 9,5 | 41,0 | 500 |
| 10129BB0142.0 | 14,0 | 9,5 | 42,0 | 500 |
| 10129BB0143.0 | 14,0 | 9,5 | 43,0 | 500 |
| 10129BB0144.0 | 14,0 | 9,5 | 44,0 | 500 |
| 10129BB0145.0 | 14,0 | 9,5 | 45,0 | 500 |
| 10129BB0146.0 | 14,0 | 9,5 | 46,0 | 500 |
| 10129BB0147.0 | 14,0 | 9,5 | 47,0 | 500 |
| 10129BB0148.0 | 14,0 | 9,5 | 48,0 | 500 |
| 10129BB0149.0 | 14,0 | 9,5 | 49,0 | 500 |
| 10129BB0150.0 | 14,0 | 9,5 | 50,0 | 500 |