

# ABSTANDSBOLZEN MIT INNEN /AUSSENGEWINDE M4/M4 - Ø 7,0



## Technische Beschreibung

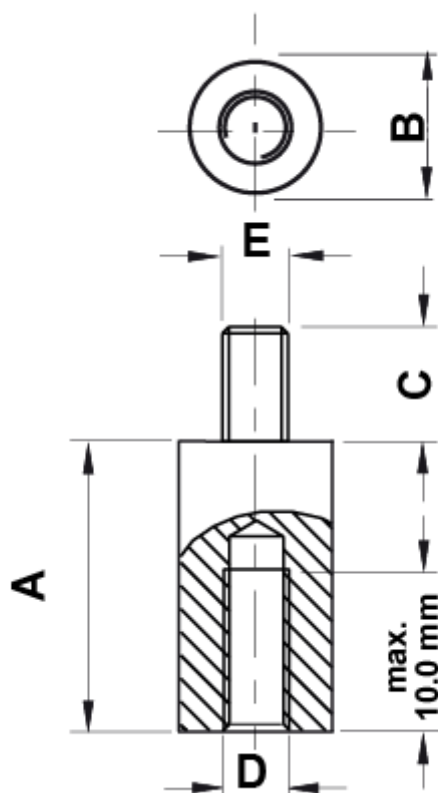
**Material:** PA 6.6

**Farbe:** schwarz

**Entflammbarkeit:** HB (UL 94)

**Temperaturbereich:** -30°C bis +150°C

Alle Maße sind in mm



Artikel	A	B	C	D	E	VPE-Stckz.
10033AA0105.0	5,0	Ø 7,0	8,0	M4	M4	500
10033AA0106.0	6,0	Ø 7,0	8,0	M4	M4	500
10033AA0107.0	7,0	Ø 7,0	8,0	M4	M4	500
10033AA0108.0	8,0	Ø 7,0	8,0	M4	M4	500
10033AA0109.0	9,0	Ø 7,0	8,0	M4	M4	500
10033AA0110.0	10,0	Ø 7,0	8,0	M4	M4	500
10033AA0111.0	11,0	Ø 7,0	8,0	M4	M4	500
10033AA0112.0	12,0	Ø 7,0	8,0	M4	M4	500
10033AA0113.0	13,0	Ø 7,0	8,0	M4	M4	500
10033AA0114.0	14,0	Ø 7,0	8,0	M4	M4	500
10033AA0115.0	15,0	Ø 7,0	8,0	M4	M4	500
10033AA0116.0	16,0	Ø 7,0	8,0	M4	M4	500
10033AA0117.0	17,0	Ø 7,0	8,0	M4	M4	500
10033AA0118.0	18,0	Ø 7,0	8,0	M4	M4	500
10033AA0119.0	19,0	Ø 7,0	8,0	M4	M4	500
10033AA0120.0	20,0	Ø 7,0	8,0	M4	M4	500
10033AA0121.0	21,0	Ø 7,0	8,0	M4	M4	500
10033AA0122.0	22,0	Ø 7,0	8,0	M4	M4	500
10033AA0123.0	23,0	Ø 7,0	8,0	M4	M4	500
10033AA0124.0	24,0	Ø 7,0	8,0	M4	M4	500
10033AA0125.0	25,0	Ø 7,0	8,0	M4	M4	500
10033AA0126.0	26,0	Ø 7,0	8,0	M4	M4	500
10033AA0127.0	27,0	Ø 7,0	8,0	M4	M4	500
10033AA0128.0	28,0	Ø 7,0	8,0	M4	M4	500
10033AA0129.0	29,0	Ø 7,0	8,0	M4	M4	500
10033AA0130.0	30,0	Ø 7,0	8,0	M4	M4	500
10033AA0131.0	31,0	Ø 7,0	8,0	M4	M4	500
10033AA0132.0	32,0	Ø 7,0	8,0	M4	M4	500
10033AA0133.0	33,0	Ø 7,0	8,0	M4	M4	500
10033AA0134.0	34,0	Ø 7,0	8,0	M4	M4	500
10033AA0135.0	35,0	Ø 7,0	8,0	M4	M4	500

Artikel	A	B	C	D	E	VPE-Stckz.
10033AA0136.0	36,0	Ø 7,0	8,0	M4	M4	500
10033AA0137.0	37,0	Ø 7,0	8,0	M4	M4	500
10033AA0138.0	38,0	Ø 7,0	8,0	M4	M4	500
10033AA0139.0	39,0	Ø 7,0	8,0	M4	M4	500
10033AA0140.0	40,0	Ø 7,0	8,0	M4	M4	500
10033AA0141.0	41,0	Ø 7,0	8,0	M4	M4	500
10033AA0142.0	42,0	Ø 7,0	8,0	M4	M4	500
10033AA0143.0	43,0	Ø 7,0	8,0	M4	M4	500
10033AA0144.0	44,0	Ø 7,0	8,0	M4	M4	500
10033AA0145.0	45,0	Ø 7,0	8,0	M4	M4	500
10033AA0146.0	46,0	Ø 7,0	8,0	M4	M4	500
10033AA0147.0	47,0	Ø 7,0	8,0	M4	M4	500
10033AA0148.0	48,0	Ø 7,0	8,0	M4	M4	500
10033AA0149.0	49,0	Ø 7,0	8,0	M4	M4	500
10033AA0150.0	50,0	Ø 7,0	8,0	M4	M4	500
10033AA0151.0	51,0	Ø 7,0	8,0	M4	M4	500
10033AA0152.0	52,0	Ø 7,0	8,0	M4	M4	500
10033AA0153.0	53,0	Ø 7,0	8,0	M4	M4	500
10033AA0154.0	54,0	Ø 7,0	8,0	M4	M4	500
10033AA0155.0	55,0	Ø 7,0	8,0	M4	M4	500
10033AA0156.0	56,0	Ø 7,0	8,0	M4	M4	500
10033AA0157.0	57,0	Ø 7,0	8,0	M4	M4	500
10033AA0158.0	58,0	Ø 7,0	8,0	M4	M4	500
10033AA0159.0	59,0	Ø 7,0	8,0	M4	M4	500
10033AA0160.0	60,0	Ø 7,0	8,0	M4	M4	500
10033AA0161.0	61,0	Ø 7,0	8,0	M4	M4	500