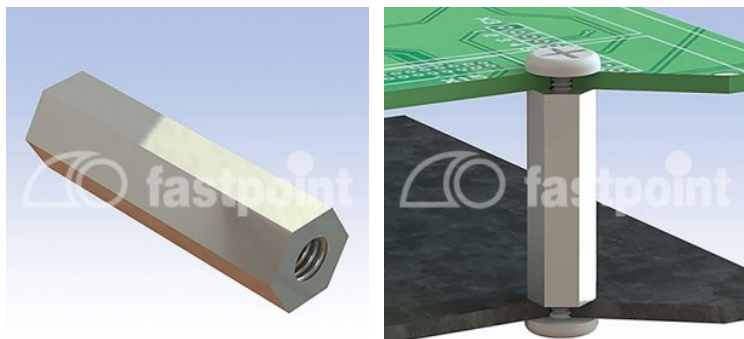


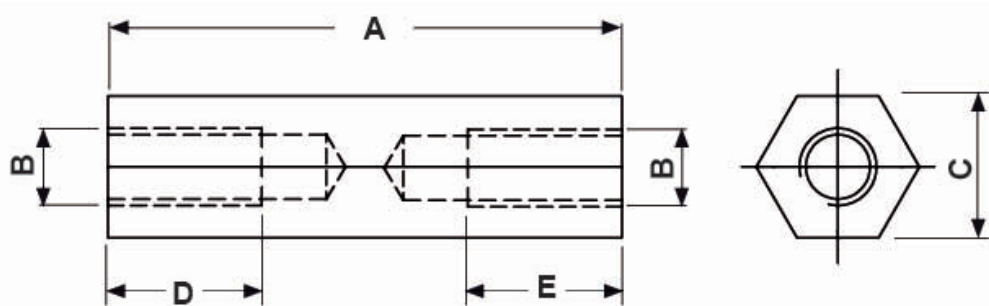
# ABSTANDBOLZEN INNENGEWINDE



## Technische Beschreibung

**Material:** Messing vernickelt

Alle Maße sind in mm



Artikel	A	B	C	D	E	VPE-Stckz.
7000MA92	5,0	M2	4,0	5,0	5,0	500
7001MA92	8,0	M2	4,0	8,0	8,0	500
7002MA92	10,0	M2	4,0	10,0	10,0	500
7003MA92	12,0	M2	4,0	12,0	12,0	500
7004MA92	15,0	M2	4,0	15,0	15,0	500
7005MA92	18,0	M2	4,0	18,0	18,0	500
7006MA92	20,0	M2	4,0	20,0	20,0	500
7007MA92	25,0	M2	4,0	8,0	8,0	500
7008MA92	30,0	M2	4,0	8,0	8,0	500
7009MA92	35,0	M2	4,0	8,0	8,0	500
7010MA92	40,0	M2	4,0	8,0	8,0	500
7021MA92	40,0	M2,5	5,0	8,0	8,0	500
7020MA92	35,0	M2,5	5,0	8,0	8,0	500
7019MA92	30,0	M2,5	5,0	8,0	8,0	500

Artikel	A	B	C	D	E	VPE-Stckz.
7018MA92	25,0	M2,5	5,0	8,0	8,0	500
7017MA92	20,0	M2,5	5,0	20,0	20,0	500
7016MA92	18,0	M2,5	5,0	18,0	18,0	500
7015MA92	15,0	M2,5	5,0	15,0	15,0	500
7014MA92	12,0	M2,5	5,0	12,0	12,0	500
7013MA92	10,0	M2,5	5,0	10,0	10,0	500
7012MA92	8,0	M2,5	5,0	8,0	8,0	500
7011MA92	5,0	M2,5	5,0	5,0	5,0	500
7048MA92	40,0	M3	5,5	10,0	10,0	500
7049MA92	50,0	M3	5,5	10,0	10,0	500
7050MA92	60,0	M3	5,5	10,0	10,0	500
7051MA92	70,0	M3	5,5	10,0	10,0	500
7052MA92	80,0	M3	5,5	10,0	10,0	500
4551MA92	5,0	M3	6,0	5,0	5,0	500
7053MA92	8,0	M3	6,0	8,0	8,0	500
4552MA92	10,0	M3	6,0	10,0	10,0	500
7054MA92	12,0	M3	6,0	12,0	12,0	500
4553MA92	15,0	M3	6,0	15,0	15,0	500
7056MA92	70,0	M3	6,0	9,0	9,0	500
4554MA92	20,0	M3	6,0	20,0	20,0	500
4555MA92	25,0	M3	6,0	9,0	9,0	500
4557MA92	35,0	M3	6,0	9,0	9,0	500
4556MA92	30,0	M3	6,0	9,0	9,0	500
4558MA92	40,0	M3	6,0	9,0	9,0	500
4559MA92	45,0	M3	6,0	9,0	9,0	500
4560MA92	50,0	M3	6,0	9,0	9,0	500
4561MA92	55,0	M3	6,0	9,0	9,0	500
4562MA92	60,0	M3	6,0	9,0	9,0	500
7057MA92	80,0	M3	6,0	9,0	9,0	500
7046MA92	30,0	M3	5,5	10,0	10,0	500
7047MA92	35,0	M3	5,5	10,0	10,0	500

Artikel	A	B	C	D	E	VPE-Stckz.
7055MA92	18,0	M3	6,0	18,0	18,0	500
7045MA92	25,0	M3	5,5	10,0	10,0	500
7032MA92	40,0	M3	5,0	10,0	10,0	500
7043MA92	20,0	M3	5,5	20,0	20,0	500
7022MA92	5,0	M3	5,0	5,0	5,0	500
7023MA92	8,0	M3	5,0	8,0	8,0	500
7024MA92	10,0	M3	5,0	10,0	10,0	500
7025MA92	12,0	M3	5,0	12,0	12,0	500
7026MA92	15,0	M3	5,0	15,0	15,0	500
7027MA92	18,0	M3	5,0	18,0	18,0	500
7028MA92	20,0	M3	5,0	20,0	20,0	500
7029MA92	25,0	M3	5,0	10,0	10,0	500
7030MA92	30,0	M3	5,0	10,0	10,0	500
7031MA92	35,0	M3	5,0	10,0	10,0	500
12947MA92						
8488MA92	45,0	M3	5,0	10,0	10,0	500
8489MA92	55,0	M3	5,0	10,0	10,0	500
7034MA92	60,0	M3	5,0	10,0	10,0	500
7035MA92	70,0	M3	5,0	10,0	10,0	500
7036MA92	80,0	M3	5,0	10,0	10,0	500
7037MA92	5,0	M3	5,5	5,0	5,0	500
7038MA92	8,0	M3	5,5	8,0	8,0	500
7039MA92	10,0	M3	5,5	10,0	10,0	500
7040MA92	12,0	M3	5,5	12,0	12,0	500
7041MA92	15,0	M3	5,5	15,0	15,0	500
7033MA92	50,0	M3	5,0	10,0	10,0	500
7042MA92	18,0	M3	5,5	18,0	18,0	500
4569MA92	35,0	M4	7,0	10,0	10,0	500
4566MA92	20,0	M4	7,0	20,0	20,0	500
4567MA92	25,0	M4	7,0	10,0	10,0	500
4568MA92	30,0	M4	7,0	10,0	10,0	500

Artikel	A	B	C	D	E	VPE-Stckz.
7076MA92	70,0	M4	7,0	10,0	10,0	500
4570MA92	40,0	M4	7,0	10,0	10,0	500
4571MA92	45,0	M4	7,0	10,0	10,0	500
4572MA92	50,0	M4	7,0	10,0	10,0	500
4573MA92	55,0	M4	7,0	10,0	10,0	500
4574MA92	60,0	M4	7,0	10,0	10,0	500
7074MA92	12,0	M4	7,0	12,0	12,0	500
7077MA92	80,0	M4	7,0	10,0	10,0	500
4565MA92	15,0	M4	7,0	15,0	15,0	500
7075MA92	18,0	M4	7,0	18,0	18,0	500
4564MA92	10,0	M4	7,0	10,0	10,0	500
7063MA92	18,0	M4	6,0	18,0	18,0	500
7073MA92	8,0	M4	7,0	8,0	8,0	500
7058MA92	5,0	M4	6,0	5,0	5,0	500
7059MA92	8,0	M4	6,0	8,0	8,0	500
7060MA92	10,0	M4	6,0	10,0	10,0	500
7061MA92	12,0	M4	6,0	12,0	12,0	500
7062MA92	15,0	M4	6,0	15,0	15,0	500
7070MA92	60,0	M4	6,0	9,0	9,0	500
7064MA92	20,0	M4	6,0	20,0	20,0	500
7066MA92	30,0	M4	6,0	9,0	9,0	500
7067MA92	35,0	M4	6,0	9,0	9,0	500
7068MA92	40,0	M4	6,0	9,0	9,0	500
7071MA92	70,0	M4	6,0	9,0	9,0	500
4563MA92	5,0	M4	7,0	5,0	5,0	500
7065MA92	25,0	M4	6,0	9,0	9,0	500
7087MA92	35,0	M5	8,0	10,0	10,0	500
7093MA92	80,0	M5	8,0	10,0	10,0	500
7092MA92	70,0	M5	8,0	10,0	10,0	500
7091MA92	60,0	M5	8,0	10,0	10,0	500
7090MA92	50,0	M5	8,0	10,0	10,0	500

Artikel	A	B	C	D	E	VPE-Stckz.
7089MA92	45,0	M5	8,0	10,0	10,0	500
7088MA92	40,0	M5	8,0	10,0	10,0	500
7083MA92	18,0	M5	8,0	18,0	18,0	500
7086MA92	30,0	M5	8,0	10,0	10,0	500
7085MA92	25,0	M5	8,0	10,0	10,0	500
7084MA92	20,0	M5	8,0	20,0	20,0	500
7082MA92	15,0	M5	8,0	15,0	15,0	500
7081MA92	12,0	M5	8,0	12,0	12,0	500
7080MA92	10,0	M5	8,0	10,0	10,0	500
7078MA92	5,0	M5	8,0	5,0	5,0	500
7079MA92	8,0	M5	8,0	8,0	8,0	500